



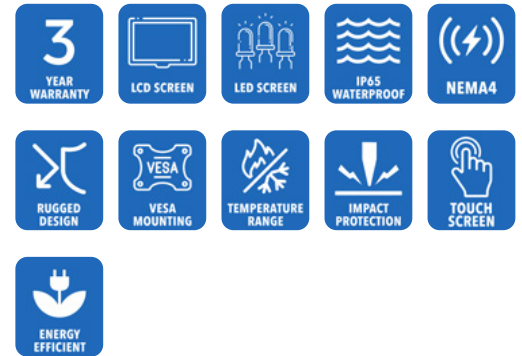
AbraxSys
RUGGED LCD SOLUTIONS

18.5" Ultra-Rugged IP65/ IP66 (NEMA 4/4X) Fully- Sealed VESA Mount FHD 1080P LCD Monitor

Model FVM-185

Model FVM-185 LCD monitor is a Ultra-Rugged NEMA 4/4X (IP65/ IP66) rated product and utilizes the latest 18.5" TFT Flat Panels Full-High Definition 1920 x 1080. The enclosure is constructed of milled 6061 Grade Aluminum which has been Zinc-Chromate Dipped then treated with Corrosion Resistant Thermoset UV-stable Black Powder-Coating. AbraxSys has added a versatile Analog-Digital interface board, backlight inverter and OSD controls. All elements, including a toughened glass protective screen have been packaged in a compact, rugged metal housing. The result is a flexible Display Head, ready for integration as part of any system; as an analog monitor, or a touchscreen driven human-machine interface.

This rugged model offers exceptional shock and vibration safeguards and its housing is constructed of high grade aluminum which has been dipped in zinc-chromate and then finished with a resilient corrosive resistant thermal-set black powder-coating. This product is very ruggedly built, features long-life displays with no scheduled End Of Life. Incorporating the latest LCD and control electronics you are assured a display the will perform reliably in harsh industrial environments. Many configurations available.



 HDMI

 Display Port

 VGA

 NTSC-PAL

 DVI

 SDI

Technical Specifications

General

Model: FVM-185	Contrast Ratio 1000:1	Optical Bonding Optical Bonding
Display Size 18.5"	Aspect Ratio 16:9	Protective Window 3mm Hardened Protective Window, for more information CLICK HERE (also available various optional Touch Screen Technologies)
Display Type Long-Life Industrial Grade LCD	Resolution 1920 x 1080 (1080p)	Power Types 90 VAC to 264 VAC, 12V DC, 24V DC, 9 to 36V DC, 20 to 53V DC
Backlight Technology Solid State, Long-Life LED – CLICK HERE for more information	Colors Supported 16.7M (8-bit/color)	
Optical Films Enhancements Optical Bonding	Viewing Angles - 88° / 88° Horizontal - 88° / 88° Vertical	
Brightness 500 nits (cd/m2)	Video Inputs DVI, HD15 (VGA), DisplayPort, Composite, S-Video, HD-SDI, HDMI	
Dimming Capabilities Multi-Functional User Keypad	User Controls Multi-Functional User Keypad	

Physical Attributes

Front Bezel Black Textured Finish per Military Standards FED-STD-595, Electrochemical Anodized for added Corrosion Resistance	Panel Mounting VESA 100mm	Sunlight Readability Sunlight Readable Model Available
Rear Enclosure High Grade 6061T Aluminum, Electrochemical Anodized for added Corrosion Resistance, Black Textured Finish per Military Standards FED-STD-595	Overall Dimensions See Drawing	Warranty Period 3 Years
	Cutout See Drawing	
	Sealability Fully Sealed	

Environmental

Sunlight Readability Sunlight Readable Model Available	Operating Temperature Range -30°C to 70°C (-22°F to 158°F)	Storage Temperature -30°C to 70°C (-22°F to 158°F)
--	--	--

Humidity

5% to 95% RH (non-condensing)

Shock

Operating: 30g's, 11ms, ½ Sine,
Non-Operating: 200G, 2ms, half
sine wave, 1 time for ± X, ± Y, ± Z.

Vibration

Operating: 1g RMS 20-500Hz,
Non-Operating: 1.5G, 10 ~ 300 Hz,
10min/cycle, 3 cycles each X, Y, Z

Fasteners

Vibration-proof, self-locking,
fastener system which will not
loosen regardless of seat torque.
Designed to help make products
safer, lower warranty costs
and prolong equipment life by
eliminating vibration; increased
safety, reliability, operating life
and reduced maintenance.

EMI

FCC Class B pursuant to Part 15
of the FCC Rules

Agency Compliance

CE

Altitude

Operating 0 to 10,000 ft.
Storage 0 to 40,000 ft.

RoHS Compliant

Yes

Rating

IP65/IP66
NEMA 4/4X

Additional Add-On Options

Touch Screen Technology**Resistive****Multi-Touch Up to 10-Point PCAP****Hardened Armored Touch
Technology****Video Input Options**

DVI, HD15 (VGA), DisplayPort,
HDMI, Composite, S-Video, HD-
SDI, and/or NTSC-PAL

Dimming Capabilities

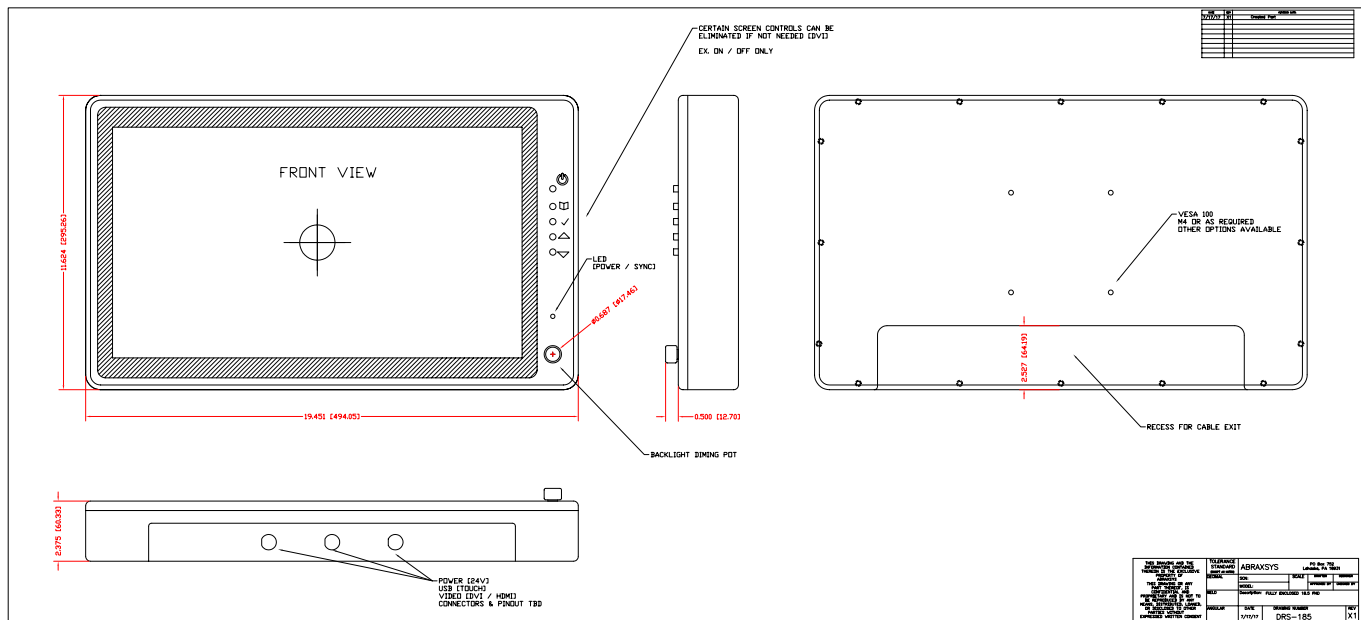
User Keypad (standard); Optional:
Manual Full-Range, Automatic
Dimming, or Remote Dimming

Custom Video Modes**Extended Operational
Temperature Ranges****Power Type Choices**

90 VAC to 264 VAC; 12V DC; 24V
DC; 9 to 36V DC; or 20 to 53V DC

**Conformal Coating of all
Internal Circuit Boards****Private Labeling Services****Customization Services****Sunlight Readable
Model Available**

Mechanical Drawings



These technical and mechanical resources are subject to change without notice.



AbraxSys
RUGGED LCD SOLUTIONS

(800) 883-9050

info@abraxsyscorp.com

www.abraxsyscorp.com

6161 Keller's Church Road, Units 6151B, 6161A, 6161B, 6171A & 6171B
Pipersville, Pennsylvania 18947 U.S.A.