



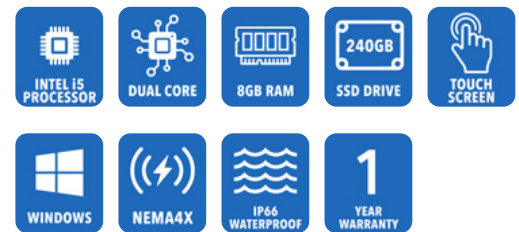
**AbraxSys**  
RUGGED LCD SOLUTIONS

# 17" Industrial NEMA 4X (IP66) Panel Mount Touch Screen Computer

**Model PC2-PS-170**

This series of rugged sunlight readable panel PCs is the ultimate solution for outdoor embedded computing and are ideally suited for high ambient light environments where dust, dirt, moisture, splashing water, hose directed spray, and various other caustic contaminants like oil, chemicals, etc. are commonplace. This advanced series features Standard: Intel 11th Generation Core I5-1145GRE (8M Cache, up to 4.10 GHz), 240GB Solid-State Drive (higher capacity available), 8GB memory (expandable to 32GB), a vast array of I/O and Ethernet ports, Intel's Tiger Lake graphics chipset, solid-state long-life LED backlighting, solid-state storage devices, and exceptional temperature ranges: Operating Temperature: -20°C to +60°C (14°F to 140°F).

As well, a multitude of add-on features are available to meet our customer's specific requirements.



# Technical Specifications

---

## Computer Specs

### CPU

- Intel® Core™ i5-1145GRE  
(up to 4.1GHz, quad-core,  
8M Cache, TDP: 28/15/12W)
- Tiger Lake 11th generation  
Intel Core processors

### Chipset

I/O Chipset EC iTE IT8528E

### Graphics Chipset

Intel® Iris® Xe Graphics,  
12th Generation

### Intel's Boost Technology

Max Turbo Frequency of 4.10 GHz

### Storage

240GB Solid State  
[Optional larger capacity  
drives also available]

### Memory

8GB expandable to 16GB or 32GB

### I/O

- USB:
  - 4xUSB 3.0
  - 4xUSB 2.0
- Com Port:
  - 2 x RS-232/422/485
  - 4 x RS-232 Out  
(other ports available, please  
let us know what is needed)

### Ethernet

- 1 x Intel® I225IT 2.5 Gigabit  
Ethernet (LAN2), 1 x Intel® I219LM  
Gigabit Ethernet PHY (LAN1),
- 3 x USB3.1 Gen2,  
1 x USB 3.1 Gen1 at I/O

### Operating System

Windows 10 IoT Enterprise  
Operating System  
[Optional Win 10 Pro or  
Win 11 Pro also available]

---

## General

### Model:

PC2-PS-170

### Display Size

17.0"

### Display Type

Long-Life Industrial Grade LCD

### Backlight Technology

Solid State, Long-Life LED,  
with Light Source Redundancy

### Optical Films Enhancements

Optical Bonding

### Brightness

350 nits (cd/m2)

### Dimming Capabilities

Optional Full-Range Manual  
Turn-Pot, Automatic Dimming  
Sensor, Remote Dimming

### Contrast Ratio

1000:1

### Aspect Ratio

5:4

### Resolution

1280 x 1024 (SXGA) Native

### Colors Supported

16 million

### Viewing Angles

-80° / 80° Horizontal  
-70° / 70° Vertical

### User Controls

Multi-Touch Up to 10-Point PCAP  
or 5-wire Resistive or Hardened  
Armored 5-wire Resistive

### Optical Bonding

Optical Bonding

### Protective Window

### Power Types

90 VAC to 264 VAC, 12V DC, 24V  
DC, 9 to 36V DC, 20 to 53V DC

## Physical Attributes

### Front Bezel

Gasket-Sealed Stainless Steel

### Rear Enclosure

High Grade 6061T Aluminum,  
Electrochemical Anodized for  
added Corrosion Resistance,  
Black Textured Finish per Military  
Standards FED-STD-595

### Panel Mounting

10-32 Stainless Mounting Studs,  
1/2" Exposed Thread

### Overall Dimensions

See Drawings

### Cutout

13.56 x 16.56 in  
(344.4 x 420.6 mm)

### Weight

18 lbs. (8.1 Kg)

### Sealability

NEMA 4X (IP66)

### Sunlight Readability

Sunlight Readable Model Available

### Warranty Period

1 Year

## Environmental

### Sunlight Readability

Sunlight Readable Model Available

### Operating Temperature Range

-20°C to +70°C (158°F)  
Extended Operational Temperature  
Ranges Available

### Storage Temperature

-40°C ~ 75°C (-40°F ~ 167°F)

### Humidity

5% to 95% RH (non-condensing)

### Shock

Operating: 30g's, 11ms, 1/2 Sine

### Vibration

Operating: 1g RMS 20-500Hz

### Fasteners

Vibration-proof, self-locking,  
fastener system

### EMI

FCC Class B pursuant to Part 15  
of the FCC Rules

### Agency Compliance

CE

### Altitude

Operating 0 to 10, 000 ft.  
Storage 0 to 40, 000 ft.

### RoHS Compliant

Yes

### Rating

NEMA 4X / IP66

## Additional Add-On Options

### Touch Screen Technology

#### Resistive

#### Multi-Touch 2-Point Resistive

#### Hardened Armored Touch Technology

### Power Type Choices

90 VAC to 264 VAC; 12V DC; 24V  
DC; 9 to 36V DC; or 20 to 53V DC

#### Extended Operational Temperature Ranges

#### Conformal Coating of all Internal Circuit Boards

#### Private Labeling Services

#### Customization Services

### Optional O/S

Windows 10 PRO or 11 PRO

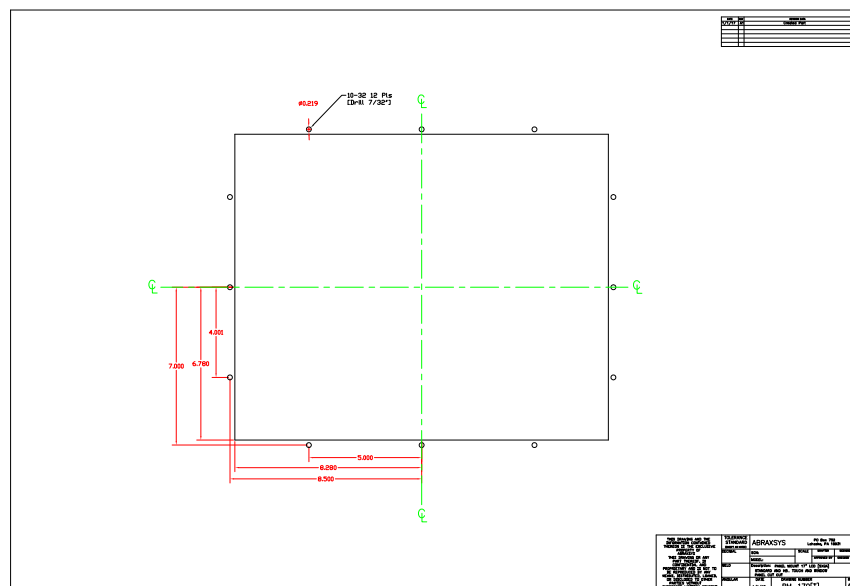
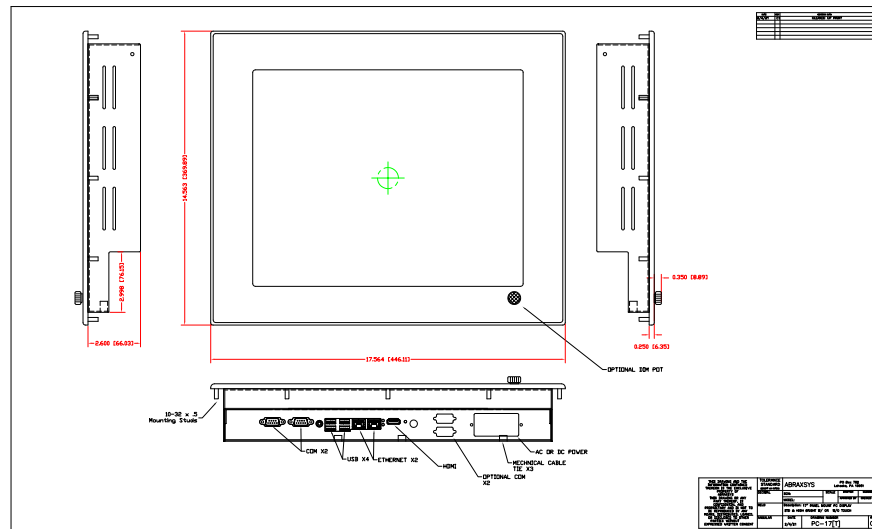
### Larger Storage Devices

NEMA 4 IP65 Aluminum  
Front Bezel

Wi-Fi (wireless networking  
technology)

#### Sunlight Readability Model

# Mechanical Drawings



These technical and mechanical resources are subject to change without notice.



**AbraxSys**  
RUGGED LCD SOLUTIONS

(800) 883-9050

info@abraxsyscorp.com

www.abraxsyscorp.com

6161 Keller's Church Road, Units 6151B, 6161A, 6161B, 6171A & 6171B  
Pipersville, Pennsylvania 18947 U.S.A.