



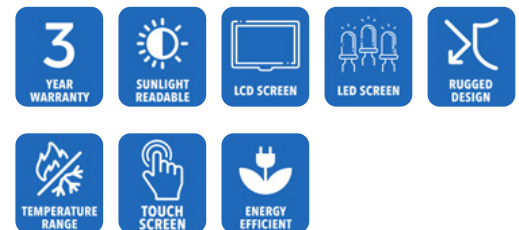
**AbraxSys**  
RUGGED LCD SOLUTIONS

# 15" Sunlight Readable Chassis Mount / Open Frame LCD Monitor

## Model SRD-CM-150

Model SRD-CM-150 is a true Daylight Readable, ultra-high quality industrial LCD system in an Open-Frame mechanical configuration. Perfect for integrators/manufacturers of outdoor KIOSKS, automation equipment, etc. The product boasts a 15" display size with 1024 x 768 pixels, 1600 nits and 800:1 contrast ratio. This industrial grade Sunlight Readable monitor is designed for use throughout a wide range of harsh outdoor applications. These rugged LCD displays are rigorously tested to ensure compliance with various industry standards and are engineered to withstand the effects of severe temperature environments and direct sun. These products perform well beyond ordinary 'commercial' type monitors. AbraxSys' high bright Sunlight Readable LCDs are ideal for use in any high ambient light condition, and will give you the intensity and brilliance your application requires.

This rugged model offers exceptional shock and vibration safeguards and its metalwork is constructed of high grade aluminum which has been dipped in zinc-chromate. This product is very ruggedly built, features long-life displays with no scheduled End Of Life. Incorporating the latest LCD and control electronics you are assured a display that will perform reliably in harsh industrial environments.



# Technical Specifications

---

## General

**Model:**  
SRD-CM-150

**Display Size**  
15.0"

**Display Type**  
Long-Life Industrial Grade LCD

**Backlight Technology**  
Long-Life Industrial Grade Active Matrix TFT LCD

**Optical Films Enhancements**  
Boosts efficiency of the backlight's light utilization and minimizes the surface reflection of ambient light. The result is a transmissive enhancement that features higher contrast and a wider range of colors, even in bright outdoor light, than traditional reflective LCDs.

**Brightness**  
1600 nits (cd/m2)

**Dimming Capabilities**  
User Keypad (standard); Optional: Manual Full-Range, Automatic Dimming, or Remote Dimming

**Contrast Ratio**  
800:1

**Aspect Ratio**  
4:3

**Resolution**  
1024 x 768 (XGA) Native

**Colors Supported**  
16.7M (8-bit/color)

**Viewing Angles**  
-80° / 80° Horizontal  
-70° / 80° Vertical

**Video Inputs**  
DVI, HD15 (VGA), HDMI, DisplayPort, S-Video, SDI, Composite

**User Controls**  
User Keypad (standard); Optional: Manual Full-Range, Automatic Dimming, or Remote Dimming

**Optical Bonding**  
[Optical Bonding](#)

**Protective Window**  
3mm Hardened Protective Window, for more information [CLICK HERE](#) (also available various optional Touch Screen Technologies)

**Power Types**  
90 VAC to 264 VAC; 12V DC; 24V DC; 9 to 36V DC; or 20 to 53V DC

---

## Physical Attributes

**Rear Enclosure**  
High Grade 6061T Aluminum, Electrochemical Anodized for added Corrosion Resistance, Black Textured Finish per Military Standards FED-STD-595

**Overall Dimensions**  
See Drawings

**Weight**  
See Drawings

**Sunlight Readability**  
The latest optical technology for high ambient light conditions

**Warranty Period**  
3 Years

---

## Environmental

**Sunlight Readability**  
The latest optical technology for high ambient light conditions

**Operating Temperature Range**  
-30°C to 80°C (-22°F to 176°F)

**Storage Temperature**  
-30°C to 85°C (-22°F to 185°F)

**Humidity**  
5% to 95% RH (non-condensing)

**Shock**  
Operating: 30g's, 11ms, ½ Sine

**Vibration**  
1g RMS 20-500Hz

**Fasteners**  
Vibration-proof, self-locking, fastener system which will not loosen regardless of seat torque. Designed to help make products safer, lower warranty costs and prolong equipment life by eliminating vibration; increased safety, reliability, operating life and reduced maintenance.

**EMI**

FCC Class B pursuant to Part 15 of the FCC Rules

**Agency Compliance**

CE

**Altitude**

Operating 0 to 10,000 ft.  
Storage 0 to 40,000 ft.

**RoHS Compliant**

Yes

---

## Additional Add-On Options

**Touch Screen Technology**

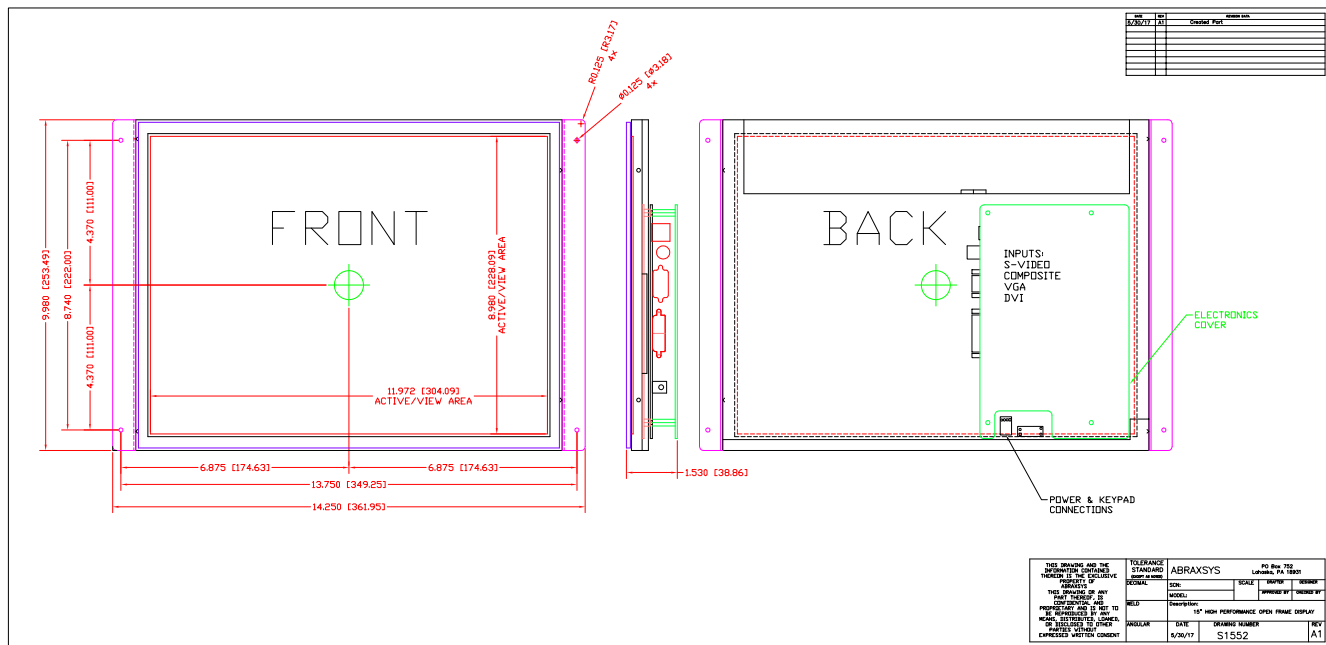
(USB or Serial): Links to the various touch technologies:

**Resistive****Multi-Touch 2-Point Resistive****Multi-Touch Up to 10-Point PCAP****Hardened Armored Touch Technology****Custom Video Modes****Extended Operational Temperature Ranges****Conformal Coating of all Internal Circuit Boards****Private Labeling Services****Customization Services****Dimming Capabilities**

User Keypad (standard); Optional: Manual Full-Range (on wire lead), Automatic Dimming, or Remote Dimming

**Optical Bonding**

# Mechanical Drawings



*These technical and mechanical resources are subject to change without notice.*



**AbraxSys**  
RUGGED LCD SOLUTIONS

(800) 883-9050

info@abraxsyscorp.com

[www.abraxsyscorp.com](http://www.abraxsyscorp.com)

6161 Keller's Church Road, Units 6151B, 6161A, 6161B, 6171A & 6171B  
Pipersville, Pennsylvania 18947 U.S.A.