



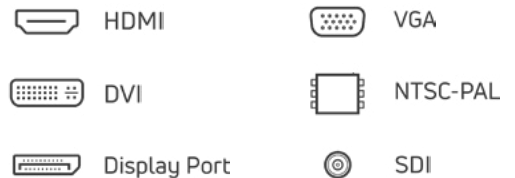
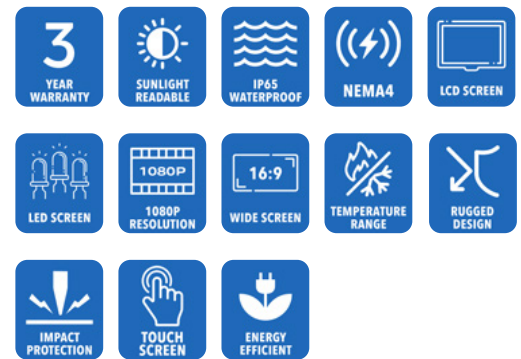
AbraxSys
RUGGED LCD SOLUTIONS

21.5" Sunlight Readable Industrial Grade IP65 (NEMA 4) LCD Flat Panel Display

Model SRD-PM-215

AbraxSys Daylight Readable Industrial LCD Flat Panel Displays has been designed for industrial applications in the Control field and other users that require a 1920 x 1080 (1080P) compatible monitor with a small footprint, ultra-high brightness display (1200 nits) with good viewing angles. The rugged, metal construction of the monitor ensures exceptional stability, especially important when touchscreen operation is necessary.

Model SRD-PM-215 LCD monitor is a NEMA 4 (IP65) rated product and utilizes the latest 21.5" 1920 x 1080 (1080P) High-Def WIDE TFT Flat Panel. AbraxSys has added a versatile Analog-Digital interface board, backlight inverter and OSD controls. All elements, including a toughened glass protective screen have been packaged in a compact, rugged metal housing. The result is a flexible Display Head, ready for integration as part of any system; as an analog monitor, or a touchscreen driven human-machine interface.



Technical Specifications

General

Model:
SRD-PM-215

Display Size
21.5"

Display Type
Long-Life Industrial Grade Active Matrix TFT LCD

Backlight Technology
Solid State, Long-Life LED, with Light Source Redundancy

Optical Films Enhancements
Boosts efficiency of the backlight's light utilization and minimizes the surface reflection of ambient light. The result is a transmissive enhancement that features higher contrast and a wider range of colors, even in bright outdoor light, than traditional reflective LCDs.

Brightness
1200 nits (cd/m2)

Dimming Capabilities
Front Keypad (can also be configured for rear controls)

Contrast Ratio
4300:1

Aspect Ratio
16:9

Resolution
1920 x 1080 (1080p)

Colors Supported
16.7M (8-bit/color)

Viewing Angles
-89° / 89° Horizontal
-89° / 89° Vertical

Video Inputs
DVI, HD15 (VGA), HDMI, DisplayPort, S-Video, SDI, Composite

User Controls
Front Keypad (can also be configured for rear controls, or Manual Full-Range Dimming Turn Pot, Automatic Dimming Sensor, or Remote Dimming)

Protective Window
3mm Sparkle Free Front Protective Impact Window or Projected Capacitive Touch Screen

Power Types
90 VAC to 264 VAC; 12V DC; 24V DC; 9 to 36V DC; or 20 to 53V DC

Physical Attributes

Front Bezel
High Grade 6061T Aluminum, Electrochemical Anodized for added Corrosion Resistance, Black Textured Finish per Military Standards FED-STD-595

Rear Enclosure
High Grade 6061T Aluminum, Electrochemical Anodized for added Corrosion Resistance, Black Textured Finish per Military Standards FED-STD-595

Panel Mounting
10-32 Stainless mounting studs, 1/2" exposed thread

Sealability
NEMA 4X (IP66)

Sunlight Readability
The latest optical technology for high ambient light conditions

Warranty Period
3 Years

Environmental

Sunlight Readability
The latest optical technology for high ambient light conditions

Operating Temperature Range
-20°C to 70°C (-4°F to 158°F)

Storage Temperature
-20°C to 70°C (-4°F to 158°F)

Humidity
5% to 95% RH (non-condensing)

Shock
Operating: 30g's, 11ms, ½ Sine

Vibration
1g RMS 20-500Hz

Fasteners
Vibration-proof, self-locking, fastener system

EMI
FCC Class B pursuant to Part 15 of the FCC Rules

Agency Compliance
CE

Altitude
Operating 0 to 10,000 ft.
Storage 0 to 40,000 ft.

RoHS Compliant
Yes

Rating
NEMA 4 / IP65

Additional Add-On Options

Touch Screen Technology

Resistive

Multi-Touch Up to 10-Point PCAP

Hardened Armored Touch Technology

Power Type Choices
90 VAC to 264 VAC; 12V DC; 24V DC; 9 to 36V DC; or 20 to 53V DC

Video Input Options
DVI, HD15 (VGA), HDMI, DisplayPort, NTSC-PAL, Composite, S-Video, and/or SDI

Conformal Coating of all Internal Circuit Boards

Custom Video Modes

Extended Operational Temperature Ranges

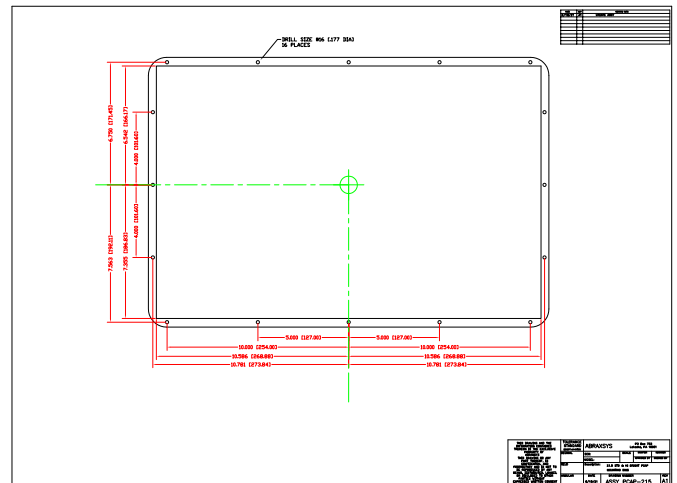
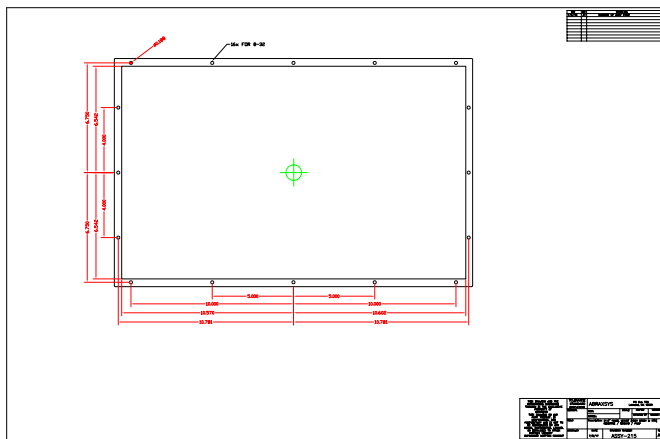
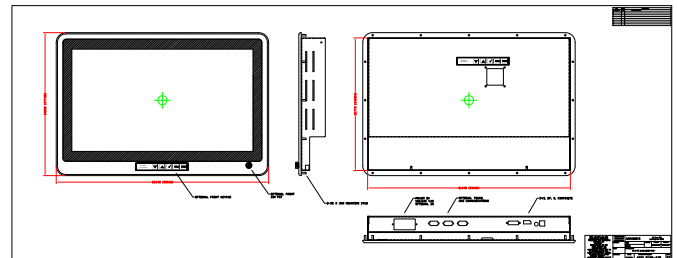
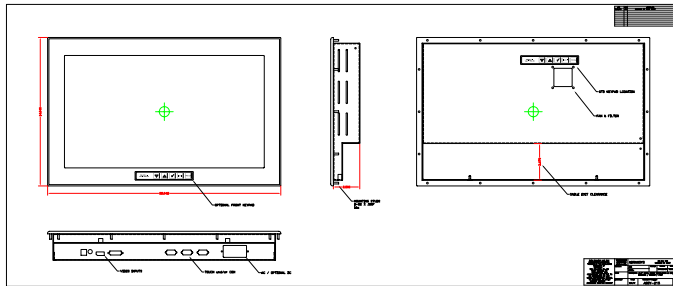
Customization Services

Dimming Capabilities
Standard, or Optional Full-Range Manual Turn-Pot, Automatic Dimming Sensor, Remote Dimming

Optical Bonding

Private Labeling Services

Mechanical Drawings



These technical and mechanical resources are subject to change without notice.



AbraxSys
RUGGED LCD SOLUTIONS

(800) 883-9050

info@abraxsyscorp.com

www.abraxsyscorp.com

6161 Keller's Church Road, Units 6151B, 6161A, 6161B, 6171A & 6171B
Pipersville, Pennsylvania 18947 U.S.A.