



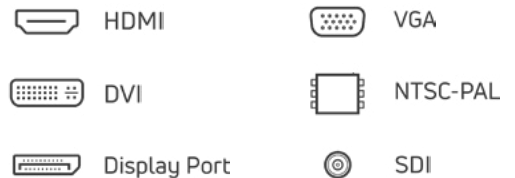
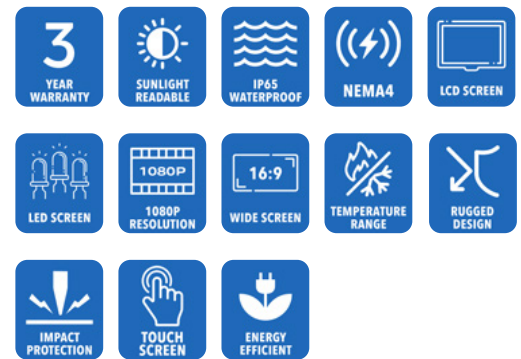
**AbraxSys**  
RUGGED LCD SOLUTIONS

# 24" Sunlight Readable High-Bright Industrial Grade NEMA 4 (IP56 / IP65) Rugged Panel Mount LCD Monitor

**Model SRD-PM-240**

AbraxSys Industrial LCD Flat Panel Displays are ideally suited for various harsh environments where dust, dirt, moisture, splashing water, hose directed spray, and various other caustic contaminants like oil, chemicals, etc.

Model SRD-PM-240 is a Second Generation model and is a high-quality industrial LCD system offering NEMA 4 (IP65) level protection at the front bezel. The product boasts a 24" display size with 1920 x 1080 (hi-def) pixels, 1400 nits brightness and 5000:1 contrast ratio. The unit is constructed a black powder-coated gasket-sealed front bezel with "bolt" mounting. This product is very ruggedly built, features long-life displays with no scheduled End Of Life. Incorporating the latest LCD and control electronics you are assured a display the will perform reliably in harsh industrial environments.



# Technical Specifications

---

## General

**Model:**  
SRD-PM-240

**Display Size**  
24.0"

**Display Type**  
Long-Life Industrial Grade Active Matrix TFT LCD

**Backlight Technology**  
Solid State, Long-Life LED, with Light Source Redundancy

**Optical Films Enhancements**  
Boosts efficiency of the backlight's light utilization and minimizes the surface reflection of ambient light. The result is a transmissive enhancement that features higher contrast and a wider range of colors, even in bright outdoor light, than traditional reflective LCDs.

**Brightness**  
1400 nits (cd/m2)

**Dimming Capabilities**  
Front Keypad (can also be configured for rear controls)

**Contrast Ratio**  
5000:1

**Aspect Ratio**  
16:9, 16:10

**Resolution**  
1920 x 1080 (1080p),  
1920 x 1200 (WUXGA)

**Colors Supported**  
16 Million

**Viewing Angles**  
-89° / 89° Horizontal  
-89° / 89° Vertical

**Video Inputs**  
DVI, HD15 (VGA), HDMI, DisplayPort, S-Video, SDI, Composite

**User Controls**  
Front Keypad (can also be configured for rear controls, or Manual Full-Range Dimming Turn Pot, Automatic Dimming Sensor, or Remote Dimming)

**Protective Window**  
3mm Sparkle Free Front Protective Impact Window or Projected Capacitive Touch Screen

**Power Types**  
90 VAC to 264 VAC; 12V DC; 24V DC; 9 to 36V DC; or 20 to 53V DC

---

## Physical Attributes

**Front Bezel**  
High Grade 6061T Aluminum, Electrochemical Anodized for added Corrosion Resistance, Black Textured Finish per Military Standards FED-STD-595

**Rear Enclosure**  
High Grade 6061T Aluminum, Electrochemical Anodized for added Corrosion Resistance, Black Textured Finish per Military Standards FED-STD-595

**Panel Mounting**  
10-32 Stainless mounting studs, 1/2" exposed thread

**Overall Dimensions**  
16.6134 x 24.2674 x 3.127 in  
(421.98 x 616.39 x 79.43 mm)

**Cutout**  
15.53 x 23.08 in  
(394.46 x 586.23 mm)

**Weight**  
20 lbs (9.07 kg)

**Sealability**  
NEMA 4X (IP66)

**Sunlight Readability**  
The latest optical technology for high ambient light conditions

**Warranty Period**  
3 Years

# Environmental

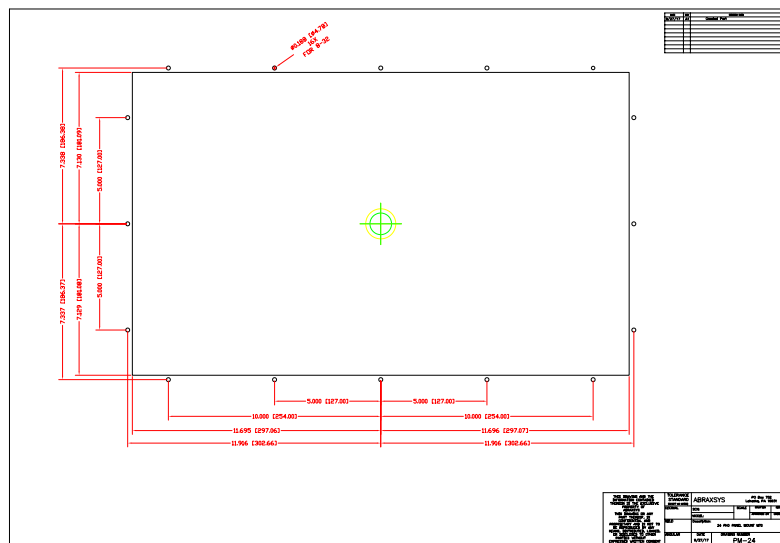
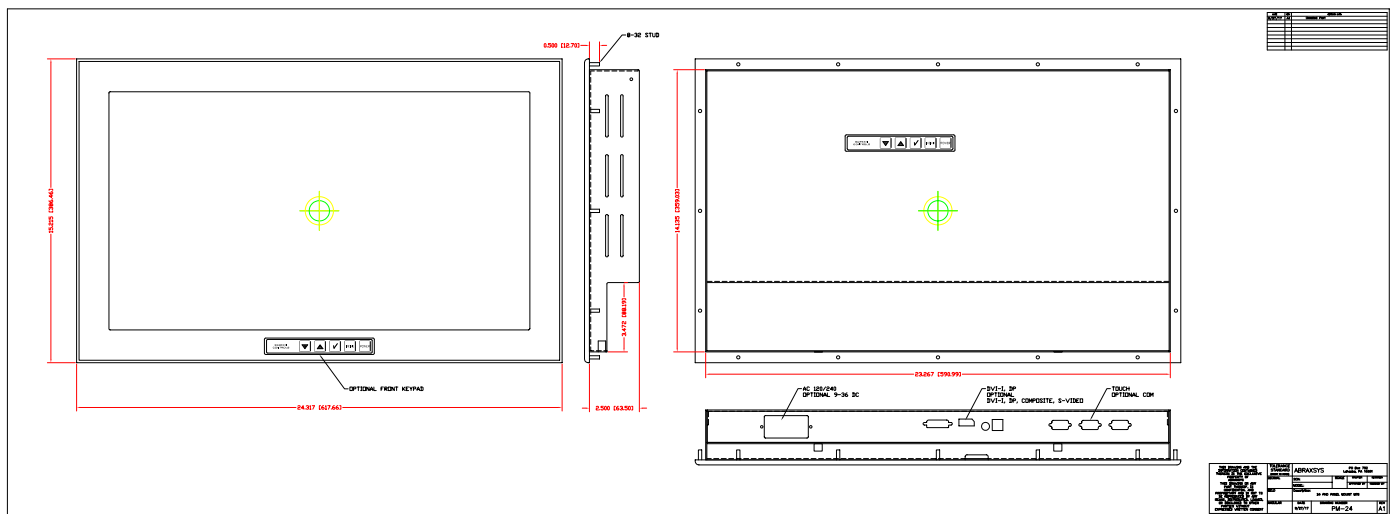
<b>Sunlight Readability</b> The latest optical technology for high ambient light conditions	<b>Shock</b> Operating: 30g's, 11ms, ½ Sine	<b>Agency Compliance</b> CE
<b>Operating Temperature Range</b> -20°C to 70°C (158°F)	<b>Vibration</b> 1g RMS 20-500Hz	<b>Altitude</b> Operating 0 to 10,000 ft. Storage 0 to 40,000 ft.
<b>Storage Temperature</b> -30°C to 80°C (-22°F to 176°F)	<b>Fasteners</b> Vibration-proof, self-locking, fastener system	<b>RoHS Compliant</b> Yes
<b>Humidity</b> 5% to 95% RH (non-condensing)	<b>EMI</b> FCC Class B pursuant to Part 15 of the FCC Rules	<b>Rating</b> NEMA 4 / IP65

---

# Additional Add-On Options

<b>Touch Screen Technology</b>  <u>Resistive</u>  <u>Multi-Touch Up to 10-Point PCAP</u>  <u>Hardened Armored Touch Technology</u>  <b>Power Type Choices</b> 90 VAC to 264 VAC; 12V DC; 24V DC; 9 to 36V DC; or 20 to 53V DC	<b><u>Video Input Options</u></b> DVI, HD15 (VGA), HDMI, DisplayPort, NTSC-PAL, Composite, S-Video, and/or SDI  <b><u>Conformal Coating of all Internal Circuit Boards</u></b>  <b><u>Custom Video Modes</u></b>  <b><u>Extended Operational Temperature Ranges</u></b>	<b><u>Customization Services</u></b>  <b><u>Dimming Capabilities</u></b> Standard, or Optional Full-Range Manual Turn-Pot, Automatic Dimming Sensor, Remote Dimming  <b><u>Optical Bonding</u></b>  <b><u>Private Labeling Services</u></b>
--	--	--

# Mechanical Drawings



These technical and mechanical resources are subject to change without notice.



**AbraxSys**  
RUGGED LCD SOLUTIONS

(800) 883-9050

info@abraxsyscorp.com

www.abraxsyscorp.com

6161 Keller's Church Road, Units 6151B, 6161A, 6161B, 6171A & 6171B  
Pipersville, Pennsylvania 18947 U.S.A.