



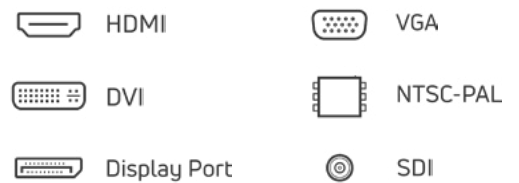
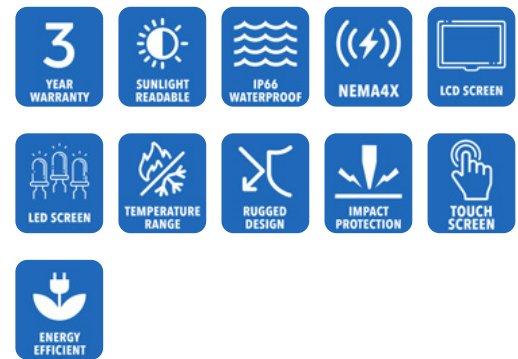
**AbraxSys**  
RUGGED LCD SOLUTIONS

# 17" Sunlight Readable Industrial Grade NEMA 4X (IP66) Panel Mount LCD Monitor

**Model SRD-PS-170**

AbraxSys Daylight Readable Industrial LCD Flat Panel Displays are ideally suited for various harsh environments where dust, dirt, moisture, splashing water, hose directed spray, and various other caustic contaminants like oil, chemicals, etc. Model SRD-PS-170 is a high-quality Sunlight Readable industrial LCD system offering NEMA 4X (IP66) level protection at the front bezel. The product boasts a 17" display size with 1280 x 1024 pixels, 1200 nits brightness (long-life LED backlight) and 1000:1 contrast ratio.

This industrial grade Sunlight Readable NEMA 4X IP66 LCD TFT monitor is designed for use throughout a wide range of harsh outdoor applications. These rugged LCD displays are rigorously tested to ensure compliance with various industry standards and are engineered to withstand the effects of severe environments such as water, dust and dirt intrusion. These products perform well beyond ordinary 'commercial' type monitors. AbraxSys' high bright Sunlight Readable LCDs are ideal for use in any high ambient light condition, and will give you the intensity and brilliance your application requires.



# Technical Specifications

---

## General

**Model:**

SRD-PS-170

**Display Size**

17.0"

**Display Type**

Long-Life Industrial Grade LCD

**Backlight Technology**

Solid State, Long-Life LED – [CLICK HERE](#) for more information

**Optical Films Enhancements**

Boosts efficiency of the backlight's light utilization and minimizes the surface reflection of ambient light. The result is a transmissive enhancement that features higher contrast and a wider range of colors, even in bright outdoor light, than traditional reflective LCDs.

**Brightness**

1200 nits (cd/m2)

**Contrast Ratio**

1000:1

**Aspect Ratio**

5:4

**Resolution**

1280 x 1024 (SXGA) Native

**Colors Supported**

16.7M (8-bit/color)

**Viewing Angles**

-89° / 89° Horizontal

-89° / 89° Vertical

**Video Inputs**

DVI, HD15 (VGA), HDMI, DisplayPort, S-Video, SDI, Composite

**User Controls**

or Remote Dimming, or Manual Full-Range Dimming Turn Pot, Automatic Dimming Sensor, Rear Keypad (can also be configured for rear controls)

**Optical Bonding**

Optional Optical Bonding of Front Protective Glass or Touch Screen Window

**Protective Window**

3mm Sparkle Free Front Protective Impact Window or Projected Capacitive Touch Screen

**Power Types**

90 VAC to 264 VAC, 12V DC, 24V DC, 9 to 36V DC, 20 to 53V DC

---

## Physical Attributes

**Front Bezel**

Gasket-Sealed Stainless Steel

**Rear Enclosure**

High Grade 6061T Aluminum, Electrochemical Anodized for added Corrosion Resistance, Black Textured Finish per Military Standards FED-STD-595

**Panel Mounting**

10-32 Stainless mounting studs, 1/2" exposed thread

**Overall Dimensions**

15.88 x 13.34 x 2.08 in  
(403.4 x 338.8 x 52.8 mm)

**Cutout**

13.56 x 16.56 in  
(344.4 x 420.6 mm)

**Weight**

18 lbs. (8.1 Kg)

**Sealability**

NEMA 4X (IP66)

**Sunlight Readability**

The latest optical technology for high ambient light conditions

**Warranty Period**

3 Years

---

## Environmental

**Sunlight Readability**

The latest optical technology for high ambient light conditions

**Operating Temperature Range**

-30°C to 70°C (-22°F to 158°F)

**Storage Temperature**

-30°C to 70°C (-22°F to 158°F)

**Humidity**

5% to 95% RH (non-condensing)

**Shock**

Operating: 30g's, 11ms, ½ Sine

**Vibration**

1g RMS 20-500Hz

**Fasteners**

Vibration-proof, self-locking, fastener system

**EMI**

FCC Class B pursuant to Part 15 of the FCC Rules

**Agency Compliance**

CE

**Altitude**

Operating 0 to 10,000 ft.  
Storage 0 to 40,000 ft.

**RoHS Compliant**

Yes

**Rating**

NEMA 4X / IP66

---

## Additional Add-On Options

**Touch Screen Technology****Resistive****Hardened Armored Touch Technology****Power Type Choices**

90 VAC to 264 VAC; 12V DC; 24V DC; 9 to 36V DC; or 20 to 53V DC

**Video Input Options**

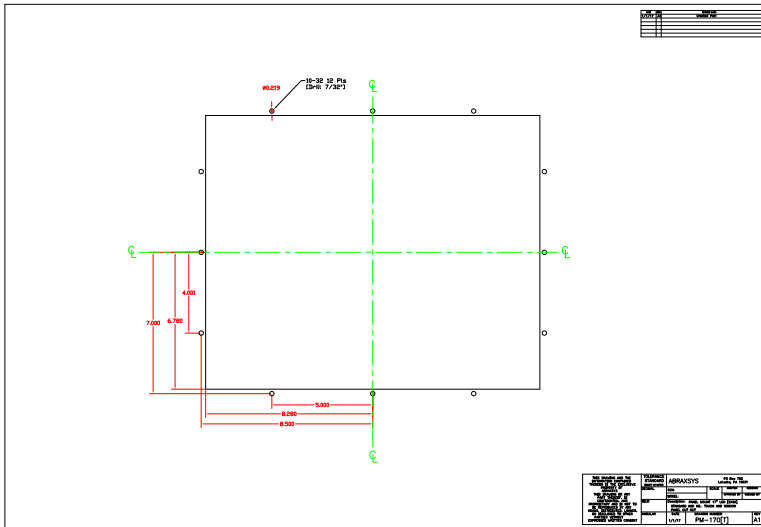
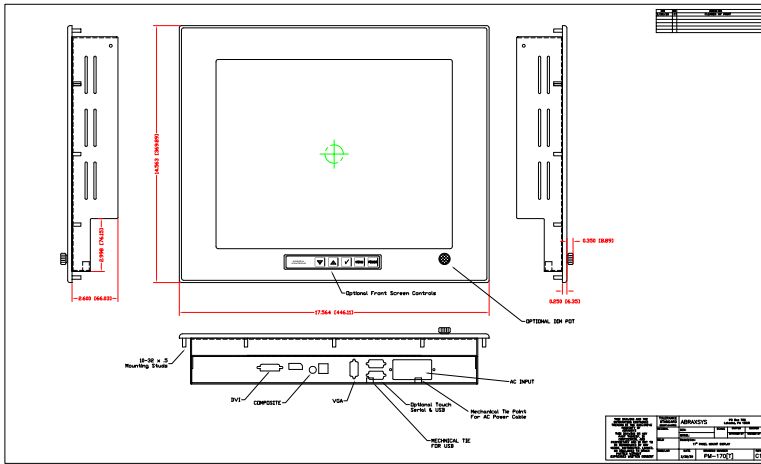
DVI, HD15 (VGA), HDMI, DisplayPort, NTSC-PAL, Composite, S-Video, and/or SDI

**Extended Operational Temperature Ranges****Conformal Coating of all Internal Circuit Boards****Custom Video Modes****Customization Services****Dimming Capabilities**

Standard, or Optional Full-Range Manual Turn-Pot, Automatic Dimming Sensor, Remote Dimming

**NEMA 4 IP65 Black Powder-Coated Aluminum Front Bezel****Private Labeling Services**

# Mechanical Drawings



These technical and mechanical resources are subject to change without notice.



**AbraxSys**  
RUGGED LCD SOLUTIONS

(800) 883-9050

info@abraxsyscorp.com

www.abraxsyscorp.com

6161 Keller's Church Road, Units 6151B, 6161A, 6161B, 6171A & 6171B  
Pipersville, Pennsylvania 18947 U.S.A.