



**AbraxSys**  
RUGGED LCD SOLUTIONS

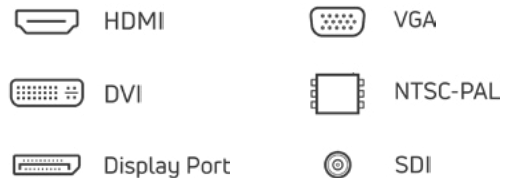
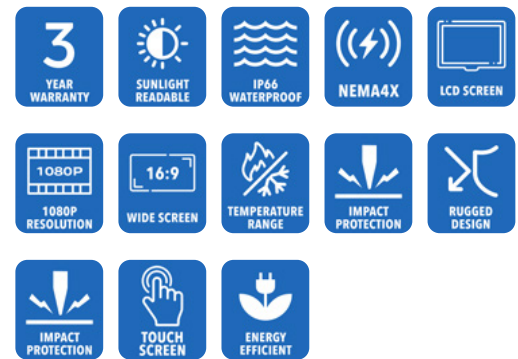
# 18.5" Sunlight Readable NEMA 4X (IP66) Industrial-Grade Wide Format 1080P Panel Mount LCD Monitor

**Model SRD-PS-185**



Model SRD-PS-185 LCD monitor is a true daylight readable high brightness NEMA 4X (IP66) rated product and utilizes the latest 18.5" 1920 x 1080 resolution TFT Flat Panels. AbraxSys has added a versatile Analog-Digital interface board, backlight inverter and OSD controls. All elements, including a toughened glass protective screen have been packaged in a compact, rugged metal housing with a gasket-sealed stainless steel front bezel. The result is a flexible Display Head, ready for integration as part of any system; as an analog monitor, or a touchscreen driven human-machine interface.

This industrial grade Sunlight Readable NEMA 4X IP66 LCD TFT monitor is designed for use throughout a wide range of harsh outdoor applications. These rugged daytime viewable LCD displays are rigorously tested to ensure compliance with various industry standards and are engineered to withstand the effects of severe environments such as water, dust and dirt intrusion. These products perform well beyond ordinary 'commercial' type monitors. AbraxSys' high bright Sunlight Readable LCDs are ideal for use in any high ambient light condition, and will give you the intensity and brilliance your application requires.



# Technical Specifications

---

## General

**Model:**

SRD-PS-185

**Display Size**

18.5"

**Display Type**

Long-Life Industrial Grade LCD

**Backlight Technology**

Solid State, Long-Life LED, with Light Source Redundancy

**Optical Films Enhancements**

Boosts efficiency of the backlight's light utilization and minimizes the surface reflection of ambient light. The result is a transmissive enhancement that features higher contrast and a wider range of colors, even in bright outdoor light, than traditional reflective LCDs.

**Brightness**

1500 nits (cd/m<sup>2</sup>)

**Contrast Ratio**

1000:1

**Aspect Ratio**

16:9

**Resolution**

1920 x 1080 (1080p)

**Colors Supported**

16.7M (8-bit/color)

**Viewing Angles**

-88° / 88° Horizontal

-88° / 88° Vertical

**Video Inputs**

DVI, HD15 (VGA), HDMI, DisplayPort, S-Video, SDI, Composite

**User Controls**

Front Keypad (can also be configured for rear controls, or Manual Full-Range Dimming Turn Pot, Automatic Dimming Sensor, or Remote Dimming)

**Protective Window**

3mm Sparkle Free Front Protective Impact Window or Projected Capacitive Touch Screen

**Power Types**

90 VAC to 264 VAC, 12V DC, 24V DC, 9 to 36V DC, 20 to 53V DC

---

## Physical Attributes

**Front Bezel**

Gasket-Sealed Stainless Steel

**Rear Enclosure**

High Grade 6061T Aluminum, Electrochemical Anodized for added Corrosion Resistance, Black Textured Finish per Military Standards FED-STD-595

**Panel Mounting**

10-32 Stainless mounting studs, 1/2" exposed thread

**Sealability**

NEMA 4X (IP66)

**Sunlight Readability**

The latest optical technology for high ambient light conditions

**Warranty Period**

3 Years

---

## Environmental

**Sunlight Readability**

The latest optical technology for high ambient light conditions

**Operating Temperature Range**

-20°C to 70°C (-4°F to 158°F)

**Storage Temperature**

-20°C to 70°C (-4°F to 158°F)

**Humidity**

5% to 95% RH (non-condensing)

**Shock**

Operating: 30g's, 11ms, ½ Sine

**Vibration**

1g RMS 20-500Hz

**Fasteners**

Vibration-proof, self-locking, fastener system

**EMI**

FCC Class B pursuant to Part 15 of the FCC Rules

**Agency Compliance**

CE

**Altitude**

Operating 0 to 10,000 ft.  
Storage 0 to 40,000 ft.

**RoHS Compliant**

Yes

**Rating**

NEMA 4X / IP66

---

## Additional Add-On Options

**Touch Screen Technology****Resistive****Hardened Armored Touch Technology****Video Input Options**

DVI, HD15 (VGA), DisplayPort, HDMI, Composite, S-Video, HD-SDI, and/or NTSC-PAL

**Custom Video Modes****Extended Operational Temperature Ranges**

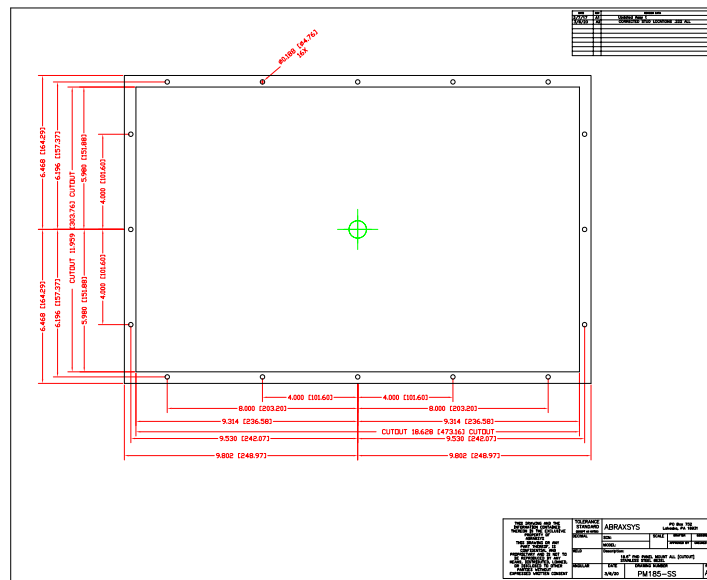
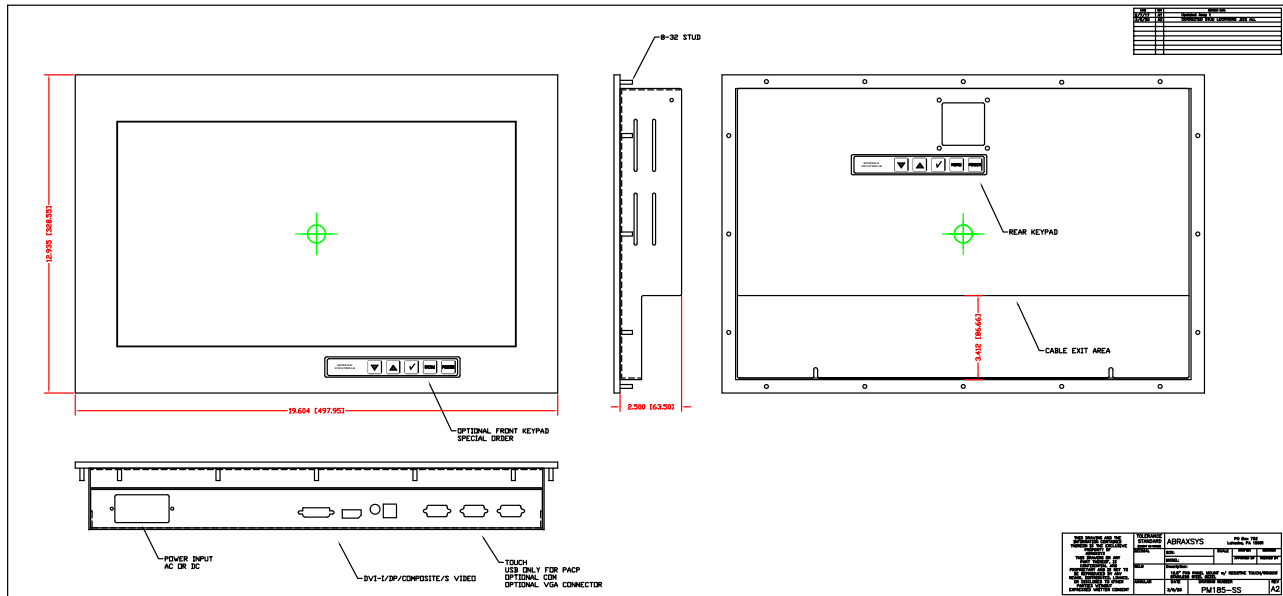
NEMA 4 IP65 Black Powder-Coated Aluminum Front Bezel

**Customization Services****Dimming Capabilities**

User Keypad (standard); Optional: Manual Full-Range, Automatic Dimming, or Remote Dimming

**Conformal Coating of all Internal Circuit Boards****Private Labeling Services**

# Mechanical Drawings



These technical and mechanical resources are subject to change without notice.



**AbraxSys**  
RUGGED LCD SOLUTIONS

(800) 883-9050

info@abraxsyscorp.com

www.abraxsyscorp.com

6161 Keller's Church Road, Units 6151B, 6161A, 6161B, 6171A & 6171B  
Pipersville, Pennsylvania 18947 U.S.A.