



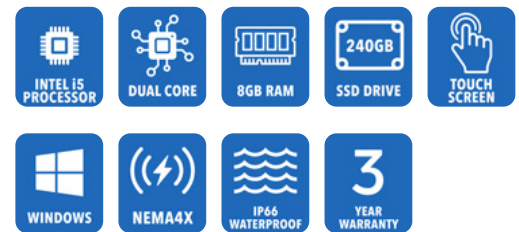
AbraxSys
RUGGED LCD SOLUTIONS

19" Industrial Expandable NEMA 4X (IP66) Panel Mount Touch Screen Computer

Model PC2-PS-190

This series of rugged Panel PCs is the ultimate solution for industrial embedded computing and are ideally suited for harsh environments where dust, dirt, moisture, splashing water, hose directed spray, and various other caustic contaminants like oil, chemicals, etc. are commonplace. This advanced series features Standard: Intel 11th Generation Core i5-1145GRE (8M Cache, up to 4.10 GHz), 240GB Solid-State Drive (higher capacity available), 8GB memory (expandable to 32GB), a vast array of I/O and Ethernet ports, Intel's Skylake graphics chipset, solid-state long-life LED backlighting, solid-state storage devices, and exceptional temperature ranges: Operating Temperature: -10°C to 60°C (14°F to 140°F), Storage Temperature: -40°C ~ 75°C (-40°F ~ 167°F).

As well, a multitude of add-on features are available to meet our customer's specific requirements.



Technical Specifications

Computer Specs

CPU

- Intel® Core™ I5-1145GRE
(up to 4.1GHz, quad-core,
8M Cache, TDP: 28/15/12W)
- Tiger Lake 11th generation
Intel Core processors

Chipset

I/O Chipset EC iTE IT8528E

Graphics Chipset

Intel® Iris® Xe Graphics,
12th Generation

Intel's Boost Technology

Max Turbo Frequency of 4.10 GHz

Storage

240GB Solid State
[Optional larger capacity
drives also available]

Memory

8GB expandable to 16GB or 32GB

I/O

- USB:
 - 4xUSB 3.0
 - 4xUSB 2.0
- Com Port:
 - 2 x RS-232/422/485
 - 4 x RS-232 Out
(other ports available, please
let us know what is needed)

Ethernet

- 1 x Intel® I225IT 2.5 Gigabit
Ethernet (LAN2), 1 x Intel® I219LM
Gigabit Ethernet PHY (LAN1),
- 3 x USB3.1 Gen2,
1 x USB 3.1 Gen1 at I/O

Operating System

Windows 10 IOE Enterprise
Operating System
[Optional Win 10 Pro or
Win 11 Pro also available]

General

Model:

PC2-PS-190

Display Size

19.0"

Display Type

Long-Life Industrial Grade LCD

Backlight Technology

Solid State, Long-Life LED,
with Light Source Redundancy

Optical Films Enhancements

Optical Bonding

Brightness

350 nits (cd/m2)

Dimming Capabilities

Optional Full-Range Manual
Turn-Pot, Automatic Dimming
Sensor, Remote Dimming

Contrast Ratio

1000:1

Aspect Ratio

5:4

Resolution

1280 x 1024 (SXGA) Native

Colors Supported

16 million

Viewing Angles

-89° / 89° Horizontal
-89° / 89° Vertical

Optical Bonding

Optical Bonding

Protective Window

Power Types

90 VAC to 264 VAC, 12V DC, 24V
DC, 9 to 36V DC, 20 to 53V DC

Physical Attributes

Front Bezel

Gasket-Sealed Stainless Steel

Rear Enclosure

High Grade 6061T Aluminum,
Electrochemical Anodized for
added Corrosion Resistance,
Black Textured Finish per Military
Standards FED-STD-595

Panel Mounting

10-32 Stainless Mounting Studs,
1/2" Exposed Thread

Overall Dimensions

19.00 x 15.720 x 3 in
(482.6 x 399 x 66mm)
(see drawings)

Cutout

14.582 x 17.862 in
(370.38 x 453.69 mm)
(see drawings)

Weight

~20 lbs

Sealability

NEMA 4X (IP66)

Sunlight Readability

Sunlight Readable Model Available

Warranty Period

3 Years

Environmental

Sunlight Readability

Sunlight Readable Model Available

Operating Temperature Range

-10°C to 60°C (14°F to 140°F)

Storage Temperature

-40°C ~ 75°C (-40°F ~ 167°F)

Humidity

5% to 95% RH (non-condensing)

Shock

Operating: 30g's, 11ms, ½ Sine

Vibration

Operating: 1g RMS 20-500Hz

Fasteners

Vibration-proof, self-locking,
fastener system

EMI

FCC Class B pursuant to Part 15
of the FCC Rules

Agency Compliance

CE

Altitude

Operating 0 to 10,000 ft.
Storage 0 to 40,000 ft.

RoHS Compliant

Yes

Rating

NEMA 4X / IP66

Additional Add-On Options

Touch Screen Technology

NEMA 4 – IP65

Custom Video Modes

Resistive

Extended Operational

Temperature Ranges

Multi-Touch Up to 10-Point PCAP

Hardened Armored Touch

Technology

Power Type Choices

90 VAC to 264 VAC; 12V DC; 24V
DC; 9 to 36V DC; or 20 to 53V DC

Conformal Coating of all

Internal Circuit Boards

Private Labeling Services

Customization Services

Dimming Capabilities

Standard, or Optional Full-Range
Manual Turn-Pot, Automatic
Dimming Sensor, Remote Dimming

UltraSlim 4K/60 HDMI 2.0

Extender over HDBaseT™ up
to 330ft & PoH Extend pristine
4K/60 with HDR, 4:4:4 with
bi-directional IR, RS-232 & LAN
[Click for More Info](#)

PCI Expansion

NEMA 4X IP66 Stainless Steel

Front Bezel

Optical Bonding

Sunlight Readable

Model Available

Dual Ethernet Ports

Operating Systems

Windows 10 IOT Enterprise

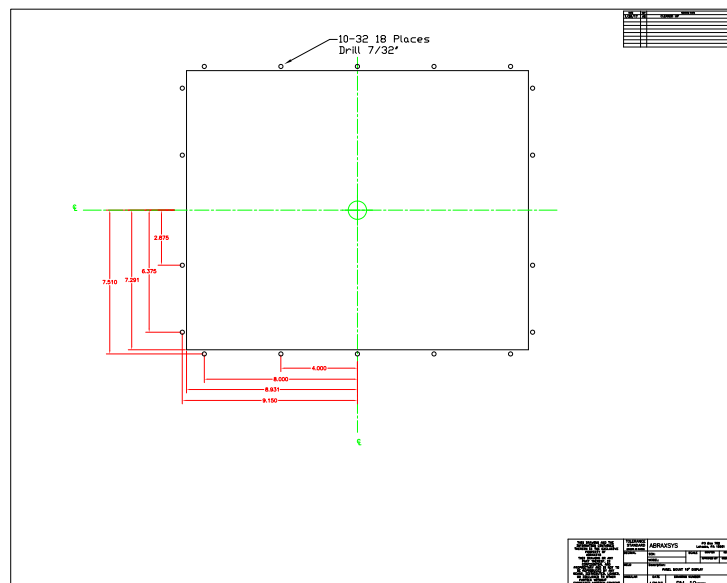
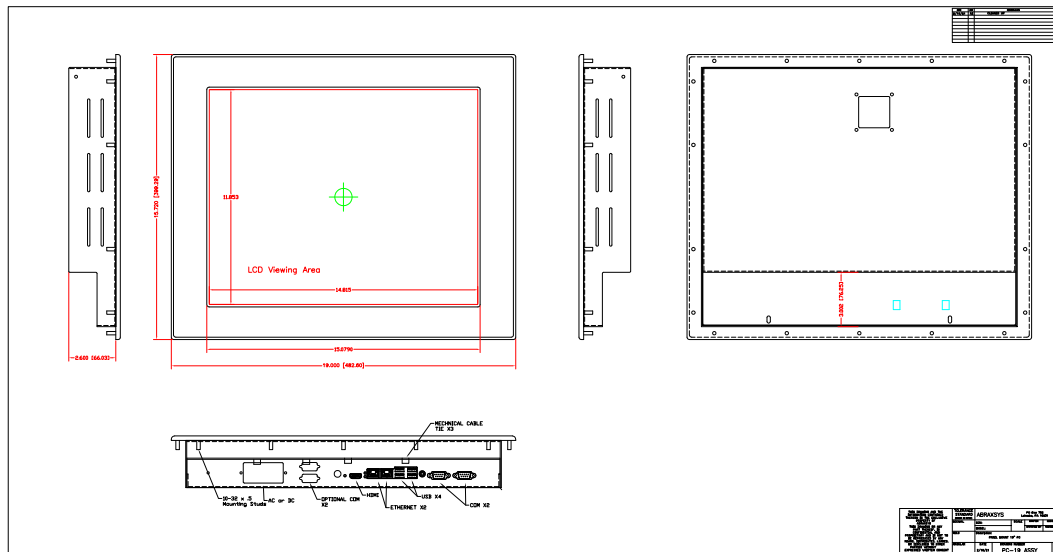
Larger Storage Devices

Dual Drive Support available

RAID Support

Wi-Fi (wireless networking
technology)

Mechanical Drawings



These technical and mechanical resources are subject to change without notice.



AbraxSys
RUGGED LCD SOLUTIONS

(800) 883-9050

info@abraxsyscorp.com

www.abraxsyscorp.com

6161 Keller's Church Road, Units 6151B, 6161A, 6161B, 6171A & 6171B
Pipersville, Pennsylvania 18947 U.S.A.