



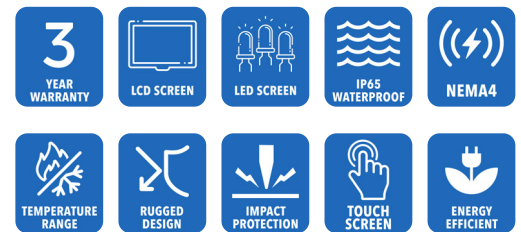
AbraxSys
RUGGED LCD SOLUTIONS

12.1" Industrial Grade NEMA 4 (IP65) Panel Mount LCD Flat Panel Display

Model PM-121

Model PM-121 is a Second Generation model and is a high-quality industrial LCD system offering NEMA 4 (IP65) level protection at the front bezel. The product boasts a 12" display size with 1024 x 768 pixels, 500 NITS brightness (long-life LED backlight) and 700:1 contrast ratio. The unit is constructed a black powder-coated gasket-sealed front bezel with "bolt" mounting.

This rugged model offers exceptional shock and vibration safeguards and its front bezel and rear housing are constructed of high grade aluminum which has been dipped in zinc-chromate and then finished with a resilient corrosive resistant thermal-set black powder-coating. This product is very ruggedly built, features long-life displays with no scheduled End Of Life. Incorporating the latest LCD and control electronics you are assured a display the will perform reliably in harsh industrial environments. Many configurations available, including our [Sun Readable SRD models](#).



HDMI



VGA



DVI



Display Port

Technical Specifications

General

Model:

PM-121

Display Size

12.1"

Display Type

Long-Life Industrial Grade Active Matrix TFT LCD

Backlight Technology

Solid State, Long-Life LED
[CLICK HERE](#) for more information

Optical Films Enhancements

Optical Bonding

Brightness

500 nits (cd/m2)

Dimming Capabilities

Front Keypad, Can Be Configured for Rear Controls (Optional)

Contrast Ratio

700:1

Aspect Ratio

4:3

Resolution

1024 x 768 (XGA) Native

Colors Supported

16.2M

Viewing Angles

-80° to 80° Horizontal
-80° to 80° Vertical

Video Inputs

DVI, HD15 (VGA), HDMI, DisplayPort

User Controls

Front Keypad (can also be configured for rear controls, or Manual Full-Range Dimming Turn Pot, Automatic Dimming Sensor, or Remote Dimming), Can be repositioned on the rear of the enclosure

Optical Bonding

Optical Bonding

Protective Window

3mm Hardened Protective Window, for more information [CLICK HERE](#) (also available various optional Touch Screen Technologies)

Power Types

90 VAC to 264 VAC; 12V DC; 24V DC; 9 to 36V DC; or 20 to 53V DC

Physical Attributes

Front Bezel

High Grade 6061T Aluminum, Electrochemical Anodized for added Corrosion Resistance, Black Textured Finish per Military Standards FED-STD-595

Rear Enclosure

High Grade 6061T Aluminum, Electrochemical Anodized for added Corrosion Resistance, Black Textured Finish per Military Standards FED-STD-595

Panel Mounting

10-32 Stainless mounting studs, 1/2" exposed thread

Overall Dimensions

13.13 x 11.08 x 1.99 in
(335.50 x 281.43 x 50.75mm)

Cutout

10.5 x 12.5 in (266.7 x 317.5mm)

Weight

TBD

Sealability

Gasket-Sealed

Sunlight Readability

The latest optical technology for high ambient light conditions

Warranty Period

3 Years

Environmental

Sunlight Readability

The latest optical technology for high ambient light conditions

Operating Temperature Range

-30°C to 85°C (-22°F to 185°F)

Storage Temperature

-40°C to 85°C (-40°F to 185°F)

Humidity

5% to 95% RH (non-condensing)

Shock

Operating: 30g's, 11ms, ½ Sine

Vibration

1g RMS 20-500Hz

Fasteners

Vibration-proof, self-locking, fastener system

EMI

FCC Class B pursuant to Part 15 of the FCC Rules

Agency Compliance

CE

Altitude

Operating 0 to 10,000 ft.
Storage 0 to 40,000 ft.

RoHS Compliant

Yes

Rating

NEMA 4 / IP65

Additional Add-On Options

Touch Screen Technology

Resistive

Hardened Armored Touch Technology

Video Input Options

DVI, HD15 (VGA), DisplayPort, and/or HDMI

Custom Video Modes

Extended Operational Temperature Ranges

Conformal Coating of all Internal Circuit Boards

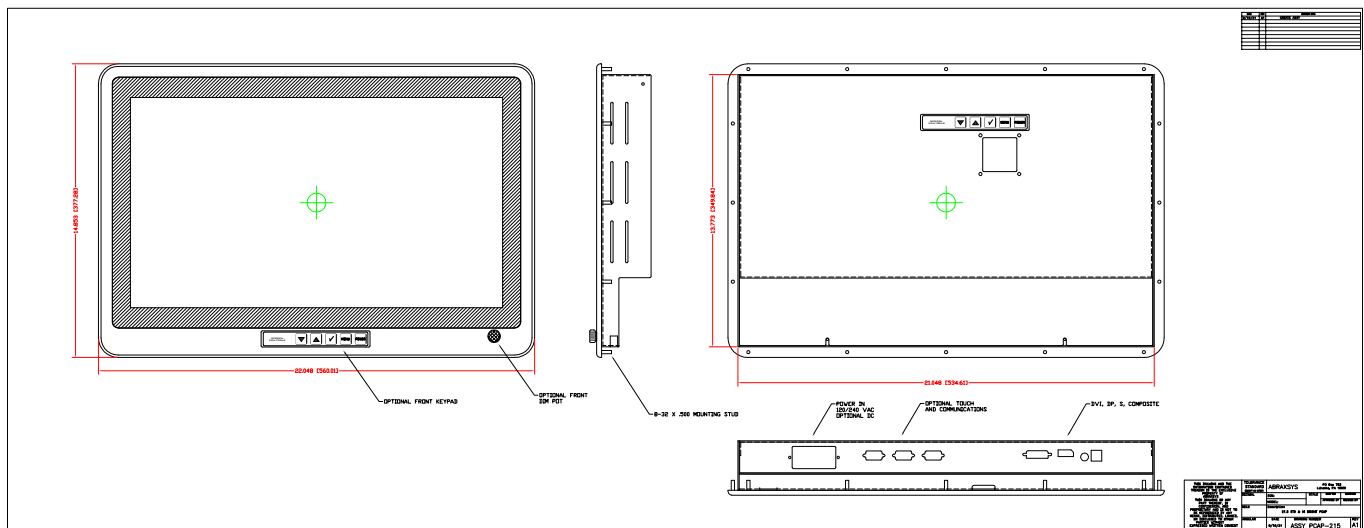
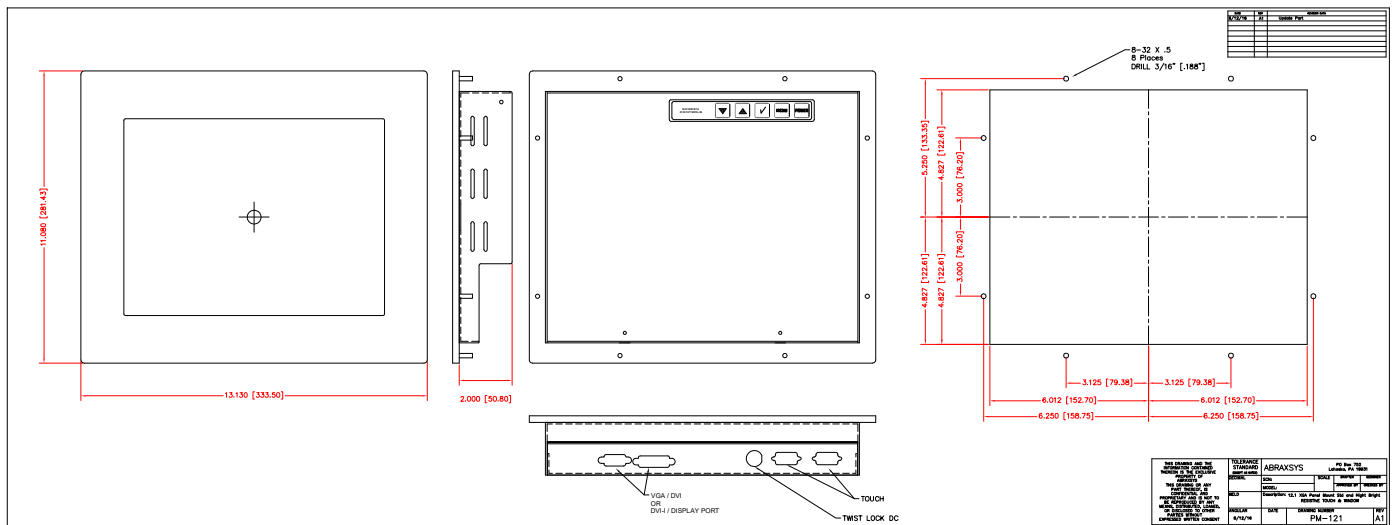
Private Labeling Services

Customization Services

NEMA 4X (IP66) Stainless Steel Front Bezel

Sunlight Readable Model Available

Mechanical Drawings



These technical and mechanical resources are subject to change without notice.



AbraxSys
RUGGED LCD SOLUTIONS

(800) 883-9050

info@abraxsyscorp.com

www.abraxsyscorp.com

6161 Keller's Church Road, Units 6151B, 6161A, 6161B, 6171A & 6171B
Pipersville, Pennsylvania 18947 U.S.A.