



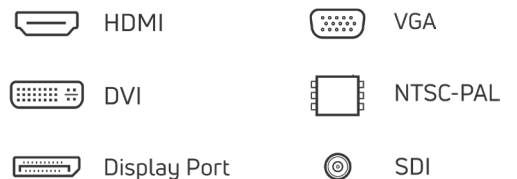
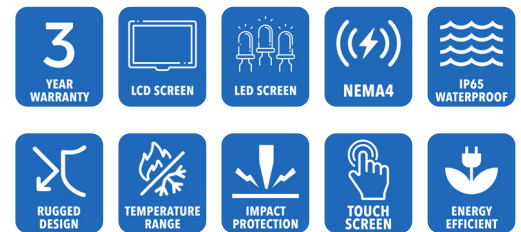
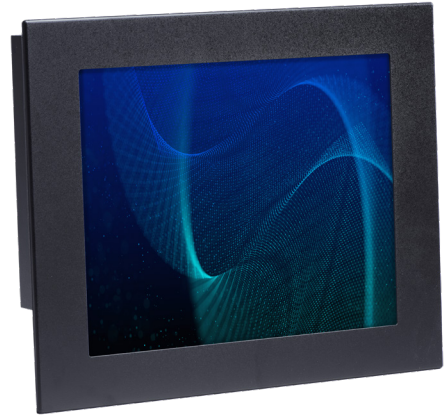
**AbraxSys**  
RUGGED LCD SOLUTIONS

# 17" NEMA 4 (IP65) Industrial Grade LCD Display

## Model PM-170

Model PM-170 is a high-quality industrial LCD system offering NEMA 4 (IP65) level protection at the front bezel. The product boasts a 17" display size with 1280 x 1024 pixels, 350 NITS brightness, long-life LED backlighting, and 1000:1 contrast ratio. The unit is constructed with a black powder-coated gasket-sealed front bezel with "bolt" mounting.

This rugged model offers exceptional shock and vibration safeguards and its front bezel and rear housing are constructed of high grade metal which has been dipped in zinc-chromate and then finished with a resilient corrosive resistant thermal-set black powder-coating. This product is very ruggedly built, features long-life displays with no scheduled End Of Life. Incorporating the latest LCD and control electronics you are assured a display that will perform reliably in many real-world harsh industrial environments. Many optional configurations available, including our [Sun Readable SRD models](#).



# Technical Specifications

---

## General

**Model:**  
SRD-PM-170

**Display Size**  
17.0"

**Display Type**  
Long-Life Industrial Grade Active Matrix TFT LCD

**Backlight Technology**  
Solid State, Long-Life LED – [CLICK HERE](#) for more information

**Brightness**  
350 nits (cd/m2)

**Dimming Capabilities**  
User Keypad (standard); Optional: Manual Full-Range, Automatic Dimming, or Remote Dimming

**Contrast Ratio**  
1000:1

**Aspect Ratio**  
5:4

**Resolution**  
1280 x 1024 (SXGA) Native

**Colors Supported**  
16.7M (8-bit/color)

**Viewing Angles**  
-85° to 85° Horizontal  
-80° / 80° Vertical

**Video Inputs**  
DVI, HD15 (VGA), HDMI, DisplayPort, S-Video, SDI, Composite

**User Controls**  
Front Keypad (can also be configured for rear controls)

**Optical Bonding**  
Optical Bonding

**Protective Window**  
3mm Hardened Protective Window, for more information [CLICK HERE](#) (also available various optional Touch Screen Technologies)

**Power Types**  
90 VAC to 264 VAC; 12V DC; 24V DC; 9 to 36V DC; or 20 to 53V DC

---

## Physical Attributes

**Front Bezel**  
High Grade 6061T Aluminum, Electrochemical Anodized for added Corrosion Resistance, Black Textured Finish per Military Standards FED-STD-595

**Rear Enclosure**  
High Grade 6061T Aluminum, Electrochemical Anodized for added Corrosion Resistance, Black Textured Finish per Military Standards FED-STD-595

**Panel Mounting**  
10-32 Stainless Mounting Studs, 1/2" Exposed Thread

**Overall Dimensions**  
15.88 x 13.34 x 2.08 in  
(403.4 x 338.8 x 52.8 mm)

**Cutout**  
13.56 x 16.56 in  
(344.4 x 420.6 mm)

**Weight**  
18 lbs. (8.1 Kg)

**Sealability**  
Gasket-Sealed

**Sunlight Readability**  
Sunlight Readable Model Available

**Warranty Period**  
3 Years

## Environmental

### Sunlight Readability

The latest optical technology for high ambient light conditions

### Operating Temperature Range

-30°C to 70°C (-22°F to 158°F)

### Storage Temperature

-30°C to 85°C (-22°F to 185°F)

### Humidity

5% to 95% RH (non-condensing)

### Shock

Operating: 30g's, 11ms, ½ Sine

### Vibration

1g RMS 20-500Hz

### Fasteners

Vibration-proof, self-locking, fastener system which will not loosen regardless of seat torque. Designed to help make products safer, lower warranty costs and prolong equipment life by eliminating vibration; increased safety, reliability, operating life and reduced maintenance.

### EMI

FCC Class B pursuant to Part 15 of the FCC Rules

### Agency Compliance

CE

### Altitude

Operating 0 to 10,000 ft. / Storage 0 to 40,000 ft.

### RoHS Compliant

Yes

### Rating

NEMA 4 / IP65

---

## Additional Add-On Options

### Touch Screen Technology

#### Resistive

#### Multi-Touch Up to 10-Point PCAP

#### Hardened Armored Touch Technology

### Video Input Options

DVI, HD15 (VGA), DisplayPort, HDMI, Composite, S-Video, SDI, and/or NTSC-PAL

### Custom Video Modes

### Extended Operational Temperature Ranges

### Conformal Coating of all Internal Circuit Boards

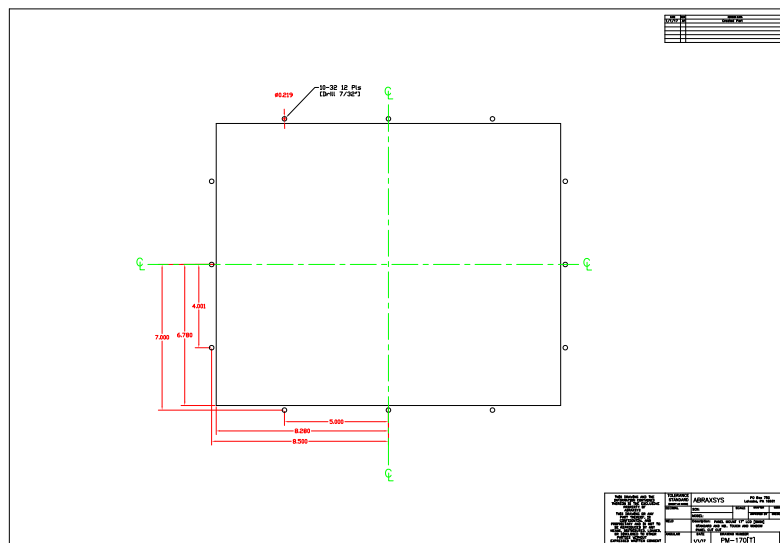
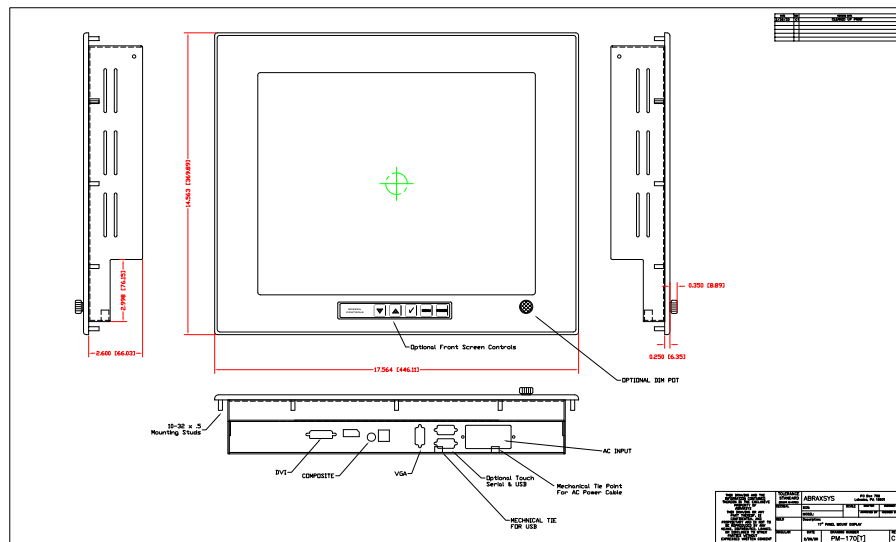
### Private Labeling Services

### Customization Services

### NEMA 4X (IP66) Stainless Steel Front Bezel

### Sunlight Readable Model Available

# Mechanical Drawings



*These technical and mechanical resources are subject to change without notice.*



**AbraxSys**  
RUGGED LCD SOLUTIONS

(800) 883-9050

info@abraxsyscorp.com

www.abraxsyscorp.com

6161 Keller's Church Road, Units 6151B, 6161A, 6161B, 6171A & 6171B  
Pipersville, Pennsylvania 18947 U.S.A.