



**AbraxSys**  
RUGGED LCD SOLUTIONS

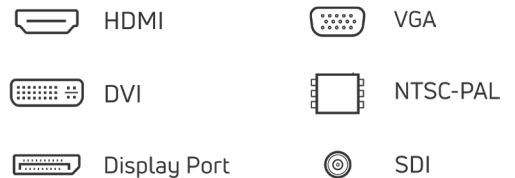
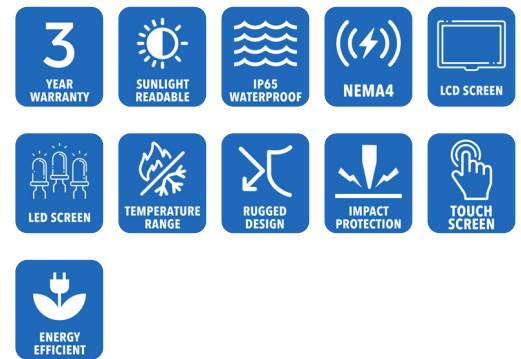
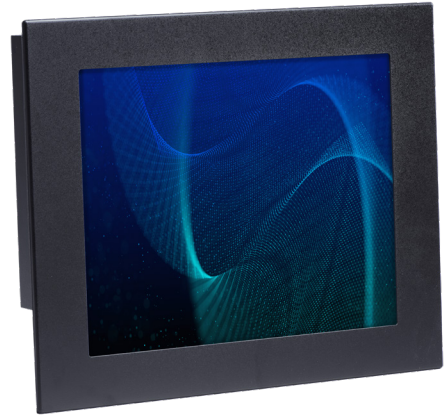
# 17" Sunlight Readable Industrial Grade NEMA 4 (IP65) Panel Mount LCD Monitor

**SRD-PM-170**

Model SRD-PM-170 is a true Daylight Readable high-quality industrial LCD system offering NEMA 4 (IP65) level protection at the front bezel. The product boasts a 17" display size with 1280 x 1024 pixels, 1000 nits brightness (long-life LED backlight) and 1000:1 contrast ratio. This industrial grade Sunlight Readable NEMA 4 IP65 LCD TFT monitor is designed for use throughout a wide range of harsh outdoor applications.

These rugged LCD displays are rigorously tested to ensure compliance with various industry standards and are engineered to withstand the effects of severe environments such as water, dust and dirt intrusion. These products perform well beyond ordinary 'commercial' type monitors. AbraxSys' high bright Sunlight Readable LCDs are ideal for use in any high ambient light condition, and will give you the intensity and brilliance your application requires.

For systems configured with Projective Capacitive Touch Screen, the AbraxSys Image unit is fitted with an extra heavy duty .375" thick bezel. The front touch surface is optically bonded 2-point multi-touch glass for wear resistance and is flush with the front surface of the bezel for easy cleaning and NO pooling of liquids on or near the touch surface so touch conflict is eliminated.



# Technical Specifications

---

## General

**Model:**  
SRD-PM-170

**Display Size**  
17.0"

**Display Type**  
Long-Life Industrial Grade Active Matrix TFT LCD

**Backlight Technology**  
IPS (In-Plane Switching technology) panel, for more information click [HERE](#)

**Optical Films Enhancements**  
Boosts efficiency of the backlight's light utilization and minimizes the surface reflection of ambient light. The result is a transmissive enhancement that features higher contrast and a wider range of colors, even in bright outdoor light, than traditional reflective LCDs.

**Brightness**  
1200 nits (cd/m2)

**Dimming Capabilities**  
Deep Dimming Down to Black, Automatic Dimming Sensor, Front Keypad (can also be configured for rear controls), or Remote Dimming, or Manual Full-Range Dimming Turn Pot

**Contrast Ratio**  
1000:1

**Aspect Ratio**  
5:4

**Resolution**  
1280 x 1024 (SXGA) Native

**Colors Supported**  
16.7M (8-bit/color)

**Viewing Angles**  
-80° to 80° Horizontal  
-70° to 80° Vertical

**Video Inputs**  
DVI, HD15 (VGA), HDMI, DisplayPort, S-Video, SDI, Composite

**User Controls**  
Multi-Functional User Keypad

**Optical Bonding**  
Optional Optical Bonding of Front Protective Glass or Touch Screen Window

**Protective Window**  
3mm Hardened Protective Window, for more information [CLICK HERE](#) (also available various optional Touch Screen Technologies)

**Power Types**  
90 VAC to 264 VAC; 12V DC; 24V DC; 9 to 36V DC; or 20 to 53V DC

---

## Physical Attributes

**Front Bezel**  
High Grade 6061T Aluminum, Electrochemical Anodized for added Corrosion Resistance, Black Textured Finish per Military Standards FED-STD-595

**Rear Enclosure**  
High Grade 6061T Aluminum, Electrochemical Anodized for added Corrosion Resistance, Black Textured Finish per Military Standards FED-STD-595

**Panel Mounting**  
10-32 Stainless Mounting Studs, 1/2" Exposed Thread

**Overall Dimensions**  
15.88 x 13.34 x 2.08 in  
(403.4 x 338.8 x 52.8 mm)

**Cutout**  
13.56 x 16.56 in  
(344.4 x 420.6 mm)

**Weight**  
18 lbs. (8.1 Kg)

**Sealability**  
NEMA 4X (IP66)

**Sunlight Readability**  
The latest optical technology for high ambient light conditions

**Warranty Period**  
3 Years

# Environmental

**Sunlight Readability**  
The latest optical technology for high ambient light conditions

**Operating Temperature Range**  
-30°C to 70°C (-22°F to 158°F)

**Storage Temperature**  
-30°C to 70°C (-22°F to 158°F)

**Humidity**  
5% to 95% RH (non-condensing)

**Shock**  
Operating: 30g's, 11ms, ½ Sine

**Vibration**  
1g RMS 20-500Hz

**Fasteners**  
Vibration-proof, self-locking, fastener system

**EMI**  
FCC Class B pursuant to Part 15 of the FCC Rules

**Agency Compliance**  
CE

**Altitude**  
Operating 0 to 10,000 ft.  
Storage 0 to 40,000 ft.

**RoHS Compliant**  
Yes

**Rating**  
NEMA 4 / IP65

---

# Additional Add-On Options

**Touch Screen Technology:**

Resistive

Multi-Touch Up to 10-Point PCAP

Hardened Armored Touch Technology

**Power Type Choices**  
90 VAC to 264 VAC; 12V DC; 24V DC; 9 to 36V DC; or 20 to 53V DC

Video Input Options  
DVI, HD15 (VGA), HDMI, DisplayPort, NTSC-PAL, Composite, S-Video, and/or SDI

Conformal Coating of all Internal Circuit Boards

Private Labeling Services

Extended Operational Temperature Ranges

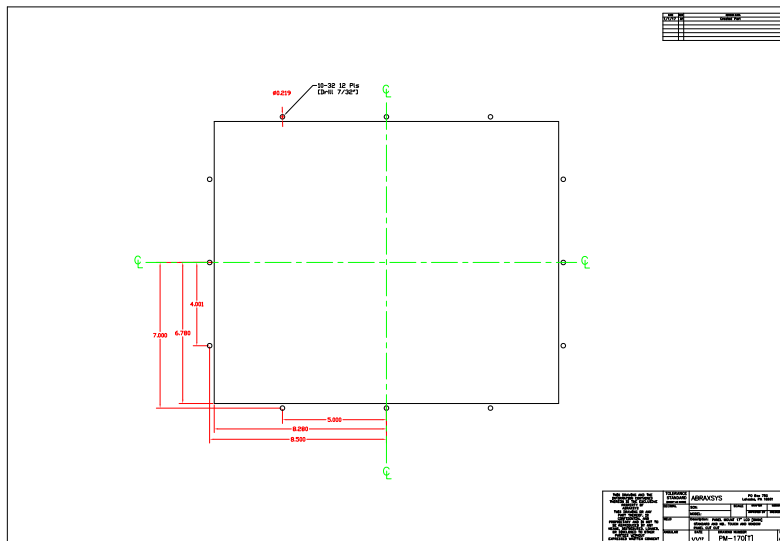
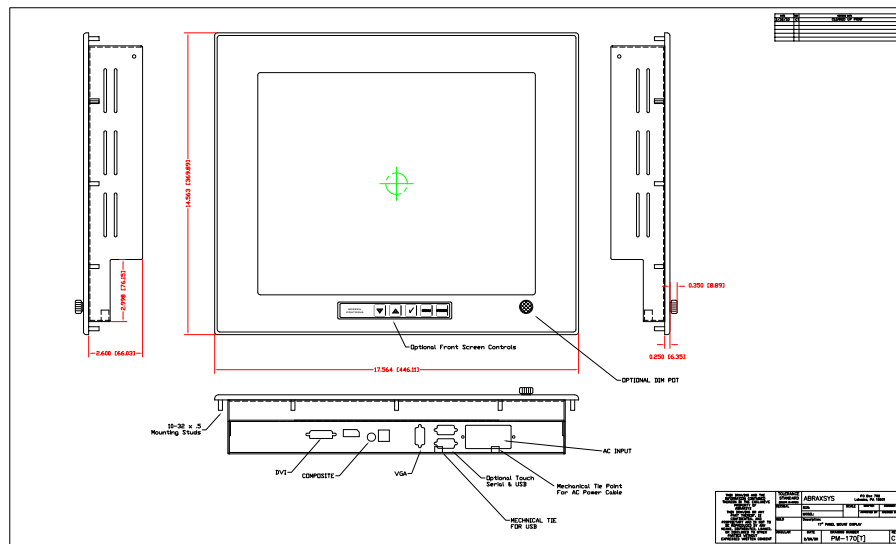
Customization Services

Custom Video Modes

**Dimming Capabilities**  
Standard, or Optional Full-Range Manual Turn-Pot, Automatic Dimming Sensor, Remote Dimming

**NEMA 4X IP66 Stainless Steel Front Bezel**

# Mechanical Drawings



These technical and mechanical resources are subject to change without notice.



**AbraxSys**  
RUGGED LCD SOLUTIONS

(800) 883-9050

info@abraxsyscorp.com

www.abraxsyscorp.com

6161 Keller's Church Road, Units 6151B, 6161A, 6161B, 6171A & 6171B  
Pipersville, Pennsylvania 18947 U.S.A.