



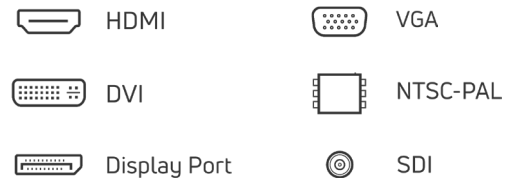
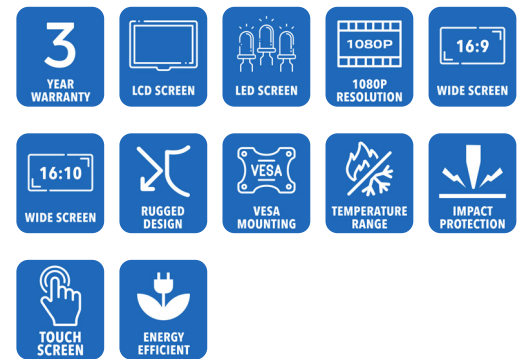
AbraxSys
RUGGED LCD SOLUTIONS

24" Industrial Grade NEMA 12 (IP52) Rugged VESA Mount WIDE LCD Monitor

Model VM-240

AbraxSys Industrial LCD Flat Panel Displays has been designed for industrial applications in the Control field and other users that require a 1080p Hi-Def compatible monitor with a small footprint, high brightness display with good viewing angles. The rugged, metal construction of the monitor ensures exceptional stability, especially important when touchscreen operation is necessary.

Model VM-240 LCD monitor is a NEMA 12 (IP52) rated product and utilizes the latest 24" Hi-Definition TFT LCD, 1920 x 1080 (1080p) or 1920 x 1200 (customer's choice). AbraxSys has added a versatile Analog-Digital interface board, backlight inverter and OSD controls. All elements, including a toughened glass protective screen have been packaged in a compact, rugged metal housing. The result is a flexible Display Head, ready for integration as part of any system; as an analog monitor, or a touchscreen driven human-machine interface.



Technical Specifications

General

Model VM-240	Dimming Capabilities Deep Dimming Down to Black	Video Inputs DVI, HD15 (VGA), DisplayPort, Composite, S-Video, HD-SDI, HDMI
Display Size 24.0"	Contrast Ratio 5000:1	User Controls Multi-Functional User Keypad
Display Type Long-Life Industrial Grade Active Matrix TFT LCD	Aspect Ratio 16:9, 16:10, panel configuration dependent	Protective Window 3mm Hardened Protective Window, for more information CLICK HERE (also available various optional Touch Screen Technologies)
Backlight Technology Solid State, Long-Life LED – CLICK HERE for more information	Resolution 1920 x 1200 (WUXGA), panel configuration dependent	Power Types 90 VAC to 264 VAC, 12V DC, 24V DC, 9 to 36V DC, 20 to 53V DC
Brightness 300 nits (cd/m2), 500 nits (cd/m2), panel configuration dependent (high bright model also available)	Colors Supported 16 Million	
	Viewing Angles -89 to 89 Horizontal -89° to 89° Vertical	

Physical Attributes

Front Bezel Stainless Steel	Panel Mounting 10-32 Stainless mounting studs, 1/2" exposed thread	Sealability NEMA 4X (IP66)
Rear Enclosure High Grade 6061T Aluminum, Electrochemical Anodized for added Corrosion Resistance, Black Textured Finish per Military Standards FED-STD-595	Overall Dimensions 8.939 x 10.624 x 2.070 in	Sunlight Readability The latest optical technology for high ambient light conditions
	Cutout 9.28 x 7.78 in (235.8 x 197.7mm)	Warranty Period 3 Years
	Weight 8 lbs	

Environmental

Sunlight Readability The latest optical technology for high ambient light conditions	Storage Temperature -30°C to 80°C (-22°F to 176°F)	Shock Operating: 30g's, 11ms, ½ Sine, Non-Operating: 200G, 2ms, half sine wave, 1 time for ± X, ± Y, ± Z.
Operating Temperature Range -30°C to 80°C (-22°F to 176°F)	Humidity 5% to 95% RH (non-condensing)	

Vibration

Operating: 1g RMS 20-500Hz,
Non-Operating: 1.5G, 10 ~ 300 Hz,
10min/cycle, 3 cycles each X, Y, Z

Fasteners

Vibration-proof, self-locking,
fastener system which will not
loosen regardless of seat torque.
Designed to help make products
safer, lower warranty costs
and prolong equipment life by
eliminating vibration; increased
safety, reliability, operating life
and reduced maintenance.

EMI

FCC Class B pursuant to Part 15
of the FCC Rules

Agency Compliance

CE

Altitude

Operating 0 to 10,000 ft.
Storage 0 to 40,000 ft.

RoHS Compliant

Yes

Rating

NEMA 4X / IP66

Additional Add-On Options

Touch Screen Technology**Resistive****Multi-Touch Up to 10-Point PCAP****Hardened Armored Touch
Technology****Video Input Options**

DVI, HD15 (VGA), DisplayPort,
HDMI, Composite, S-Video,
HD-SDI, and/or NTSC-PAL

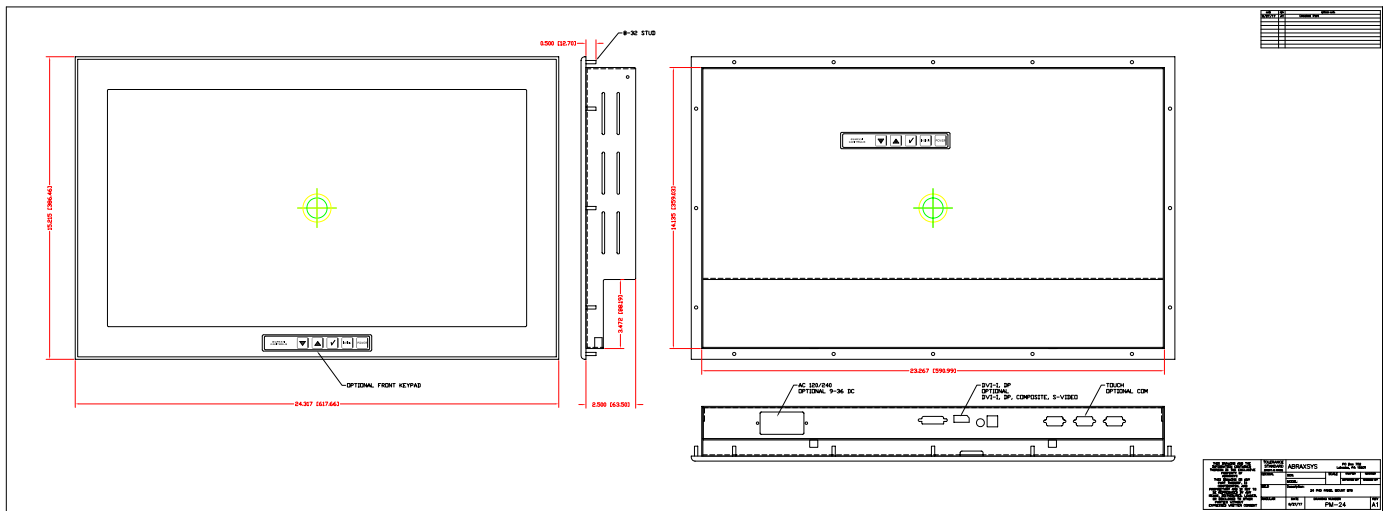
Custom Video Modes**Extended Operational
Temperature Ranges****Conformal Coating of all
Internal Circuit Boards****Power Type Choices**

90 VAC to 264 VAC; 12V DC; 24V
DC; 9 to 36V DC; or 20 to 53V DC

Private Labeling Services**Customization Services****Dimming Capabilities**

User Keypad (standard); Optional:
Manual Full-Range, Automatic
Dimming, or Remote Dimming

Mechanical Drawings



These technical and mechanical resources are subject to change without notice.



AbraxSys
RUGGED LCD SOLUTIONS

(800) 883-9050

info@abraxsyscorp.com

www.abraxsyscorp.com

6161 Keller's Church Road, Units 6151B, 6161A, 6161B, 6171A & 6171B
Pipersville, Pennsylvania 18947 U.S.A.